

EVACUATION DIAGRAM

first 5 minutes 
Experience makes all the difference.

Phone: 1300 321 120
Website: first5minutes.com.au

Issue Date: 1 September 2015
(Valid for a period of 5 years)

Diagrams used on this sign are NOT to scale.

RESPONSE TO AN EMERGENCY

R.A.C.E

Whilst emergencies differ, the RACE procedure offers a set of immediate, generic responses which are easily memorised and appropriate in most circumstances. They are:

- R REMOVE** If safe to do so, remove or rescue any persons in immediate danger.
- A ALERT** Notify appropriate personnel or combatting authority. This usually involves calling the Emergency Number and operating the nearest fire alarm.
- C CONTAIN / CONTROL** Close doors, and if safe to do so, deal with the threat.
- E EVACUATE / EXTINGUISH** Remove all other persons from danger. Evacuate to the Assembly Area and remain there until advised otherwise by the Chief Warden.



STAGES OF EVACUATION

Evacuation should be conducted in three distinct stages depending on the severity of the incident.

STAGE 1 - REMOVAL OF PERSONS FROM THE IMMEDIATE DANGER AREA

Occupants are removed from the affected compartment into the next compartment, eg from a room into a corridor. Doors should be closed to confine smoke and fire in the affected compartment.

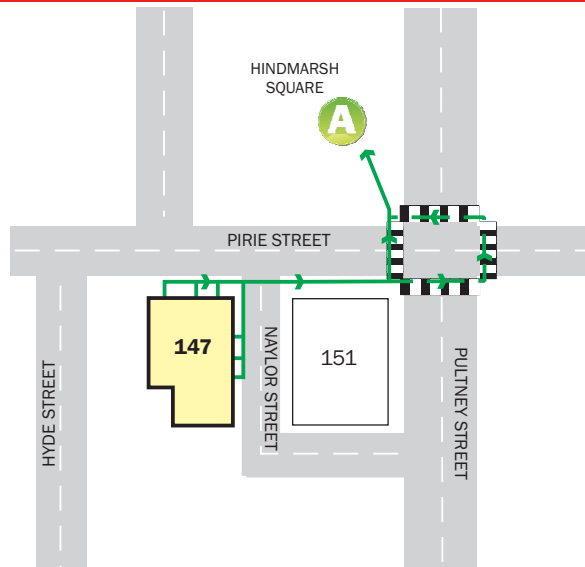
STAGE 2 - REMOVAL TO A SAFE AREA

If the severity of smoke or heat warrants further evacuation, occupants and visitors should be moved to safe areas on the same level.

STAGE 3 - COMPLETE EVACUATION OF THE FLOOR

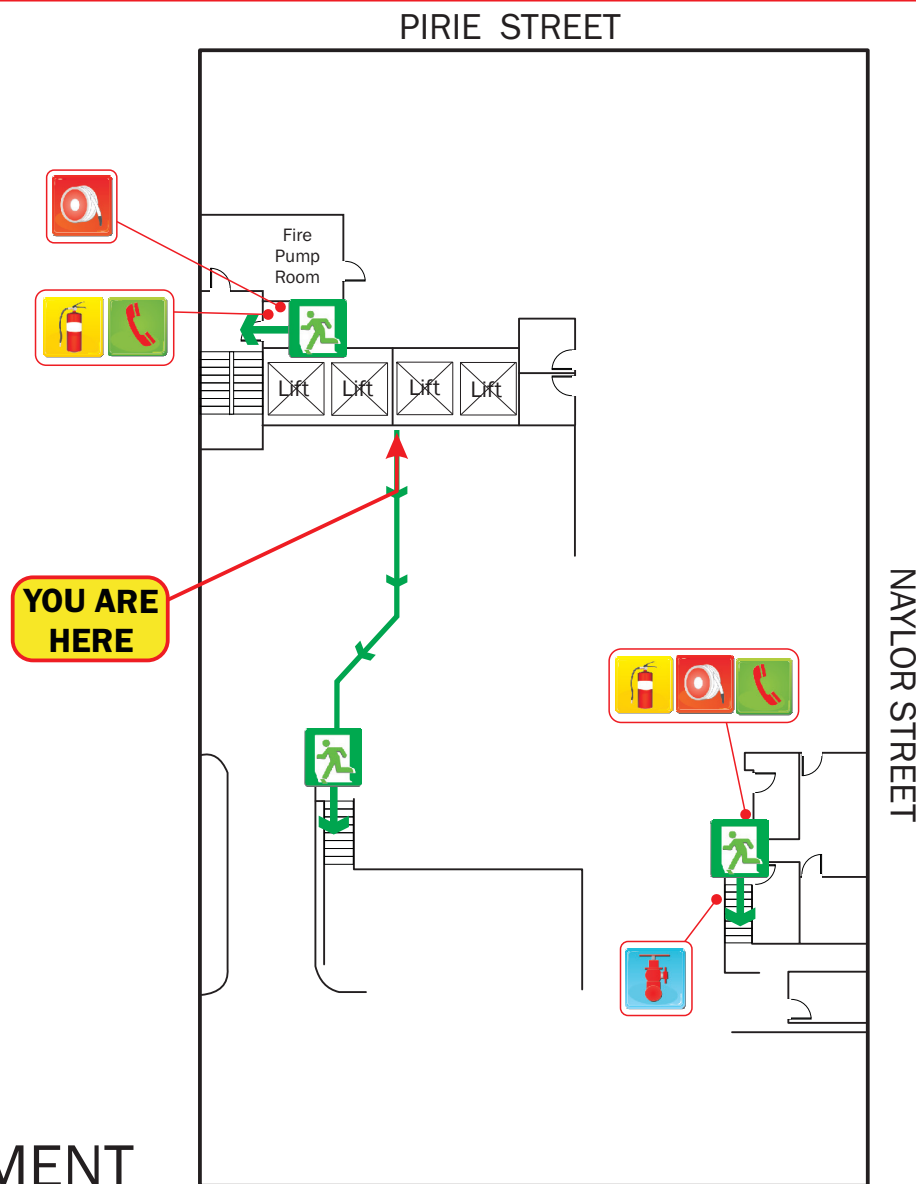
Should the emergency necessitate evacuation of the affected floor, Wardens are to direct occupants to the assembly area via the emergency exits.

ASSEMBLY AREA



BASEMENT

AURORA ON PIRIE, 147 PIRIE STREET, ADELAIDE



FIRE HOSE REEL



DRY CHEMICAL POWDER FIRE EXTINGUISHER



FIRE HYDRANT



WARDEN INTERCOM PHONE



ASSEMBLY AREA



ALTERNATIVE EXIT ROUTE



EXIT ROUTE



EMERGENCY EXIT



EVACUATION DIAGRAM

first 5 minutes 
Experience makes all the difference.

Phone: 1300 321 120
Website: first5minutes.com.au

Issue Date: 1 September 2015
(Valid for a period of 5 years)

Diagrams used on this sign are NOT to scale.

RESPONSE TO AN EMERGENCY

R.A.C.E

Whilst emergencies differ, the RACE procedure offers a set of immediate, generic responses which are easily memorised and appropriate in most circumstances. They are:

- R REMOVE** If safe to do so, remove or rescue any persons in immediate danger.
- A ALERT** Notify appropriate personnel or combatting authority. This usually involves calling the Emergency Number and operating the nearest fire alarm.
- C CONTAIN / CONTROL** Close doors, and if safe to do so, deal with the threat.
- E EVACUATE / EXTINGUISH** Remove all other persons from danger. Evacuate to the Assembly Area and remain there until advised otherwise by the Chief Warden.



STAGES OF EVACUATION

Evacuation should be conducted in three distinct stages depending on the severity of the incident.

STAGE 1 - REMOVAL OF PERSONS FROM THE IMMEDIATE DANGER AREA

Occupants are removed from the affected compartment into the next compartment, eg from a room into a corridor. Doors should be closed to confine smoke and fire in the affected compartment.

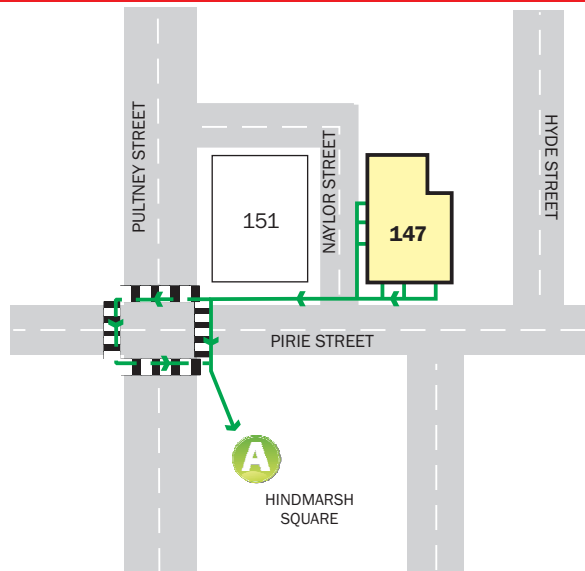
STAGE 2 - REMOVAL TO A SAFE AREA

If the severity of smoke or heat warrants further evacuation, occupants and visitors should be moved to safe areas on the same level.

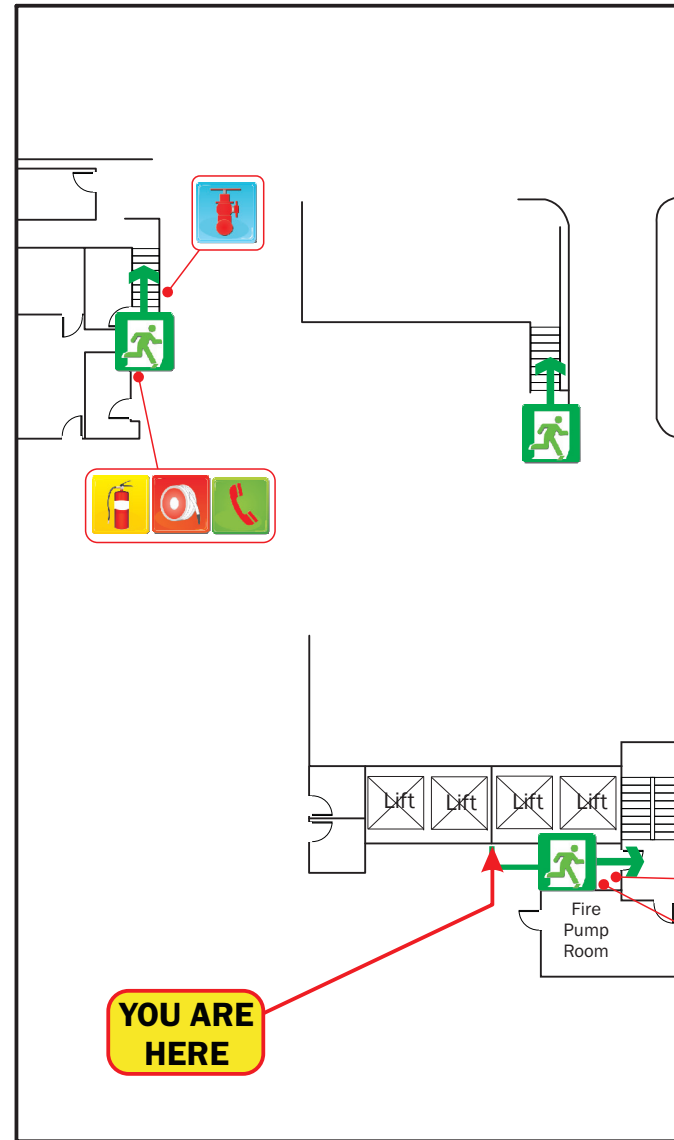
STAGE 3 - COMPLETE EVACUATION OF THE FLOOR

Should the emergency necessitate evacuation of the affected floor, Wardens are to direct occupants to the assembly area via the emergency exits.

ASSEMBLY AREA



NAYLOR STREET



BASEMENT

PIRIE STREET

AURORA ON PIRIE, 147 PIRIE STREET, ADELAIDE



FIRE HOSE REEL



DRY CHEMICAL POWDER FIRE EXTINGUISHER



FIRE HYDRANT



WARDEN INTERCOM PHONE



ASSEMBLY AREA



ALTERNATIVE EXIT ROUTE



EXIT ROUTE



EMERGENCY EXIT



N

EVACUATION DIAGRAM

first 5 minutes
Experience makes all the difference.



Phone: 1300 321 120
Website: first5minutes.com.au

Issue Date: 1 September 2015
(Valid for a period of 5 years)

Diagrams used on this sign are NOT to scale.

RESPONSE TO AN EMERGENCY

R.A.C.E

Whilst emergencies differ, the RACE procedure offers a set of immediate, generic responses which are easily memorised and appropriate in most circumstances. They are:

- R REMOVE** If safe to do so, remove or rescue any persons in immediate danger.
- A ALERT** Notify appropriate personnel or combatting authority. This usually involves calling the Emergency Number and operating the nearest fire alarm.
- C CONTAIN / CONTROL** Close doors, and if safe to do so, deal with the threat.
- E EVACUATE / EXTINGUISH** Remove all other persons from danger. Evacuate to the Assembly Area and remain there until advised otherwise by the Chief Warden.



STAGES OF EVACUATION

Evacuation should be conducted in three distinct stages depending on the severity of the incident.

STAGE 1 - REMOVAL OF PERSONS FROM THE IMMEDIATE DANGER AREA

Occupants are removed from the affected compartment into the next compartment, eg from a room into a corridor. Doors should be closed to confine smoke and fire in the affected compartment.

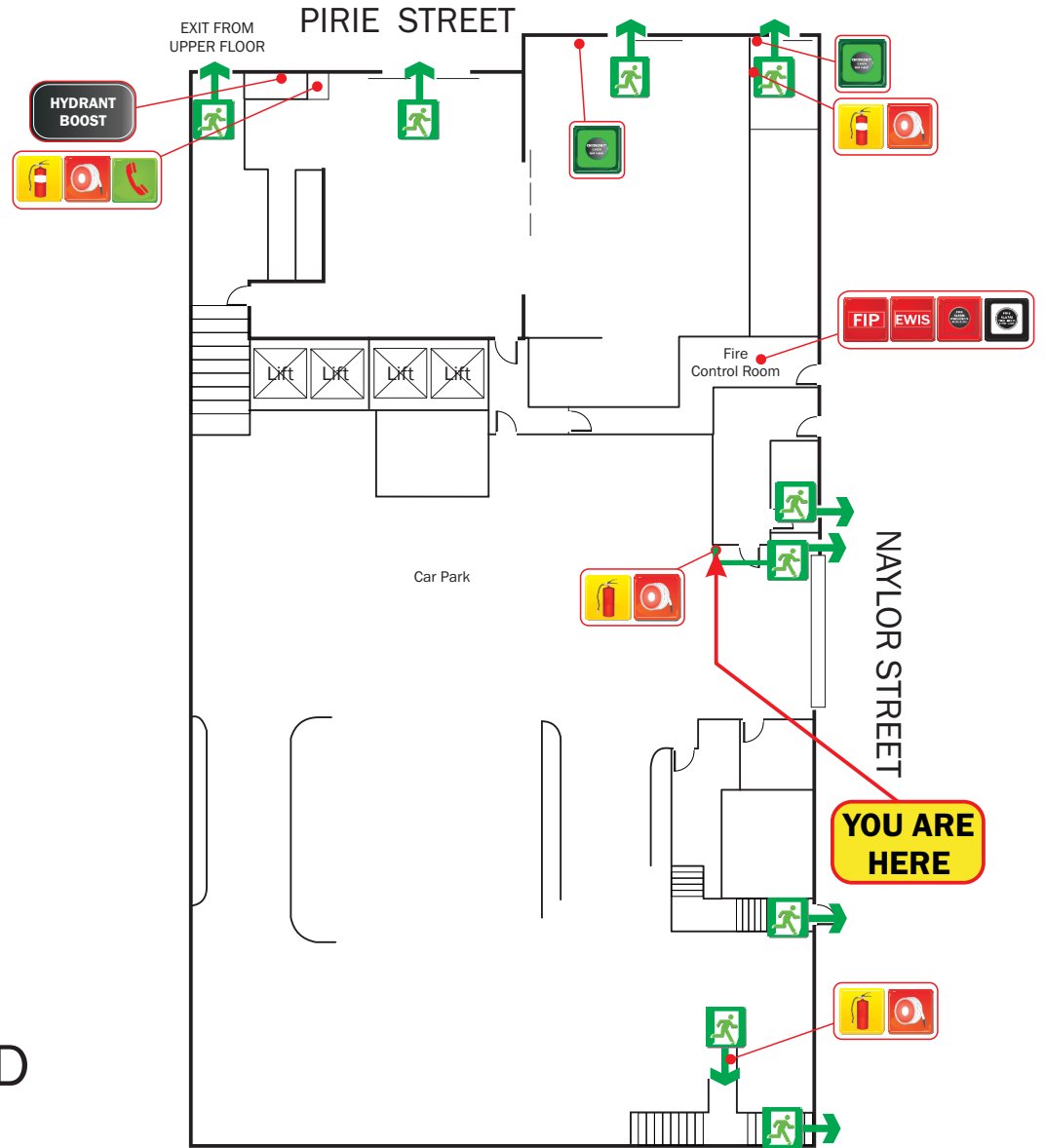
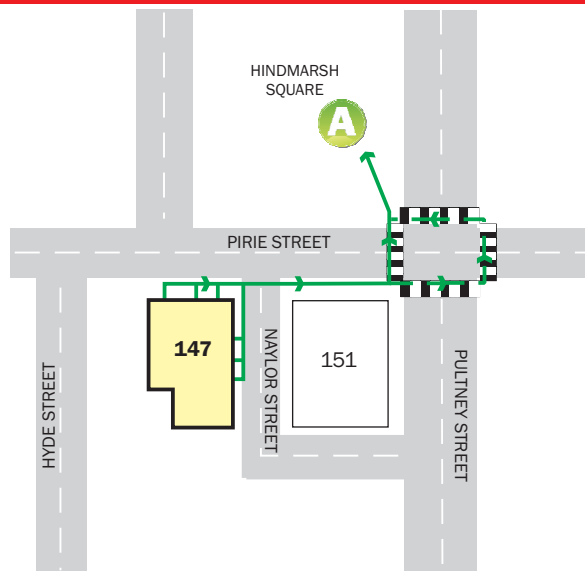
STAGE 2 - REMOVAL TO A SAFE AREA

If the severity of smoke or heat warrants further evacuation, occupants and visitors should be moved to safe areas on the same level.

STAGE 3 - COMPLETE EVACUATION OF THE FLOOR

Should the emergency necessitate evacuation of the affected floor, Wardens are to direct occupants to the assembly area via the emergency exits.

ASSEMBLY AREA



GROUND FLOOR

AURORA ON PIRIE, 147 PIRIE STREET, ADELAIDE



EVACUATION DIAGRAM

first 5 minutes
Experience makes all the difference.



Phone: 1300 321 120
Website: first5minutes.com.au

Issue Date: 1 September 2015
(Valid for a period of 5 years)

Diagrams used on this sign are NOT to scale.

RESPONSE TO AN EMERGENCY

R.A.C.E

Whilst emergencies differ, the RACE procedure offers a set of immediate, generic responses which are easily memorised and appropriate in most circumstances. They are:

- R REMOVE** If safe to do so, remove or rescue any persons in immediate danger.
- A ALERT** Notify appropriate personnel or combatting authority. This usually involves calling the Emergency Number and operating the nearest fire alarm.
- C CONTAIN / CONTROL** Close doors, and if safe to do so, deal with the threat.
- E EVACUATE / EXTINGUISH** Remove all other persons from danger. Evacuate to the Assembly Area and remain there until advised otherwise by the Chief Warden.



STAGES OF EVACUATION

Evacuation should be conducted in three distinct stages depending on the severity of the incident.

STAGE 1 - REMOVAL OF PERSONS FROM THE IMMEDIATE DANGER AREA

Occupants are removed from the affected compartment into the next compartment, eg from a room into a corridor. Doors should be closed to confine smoke and fire in the affected compartment.

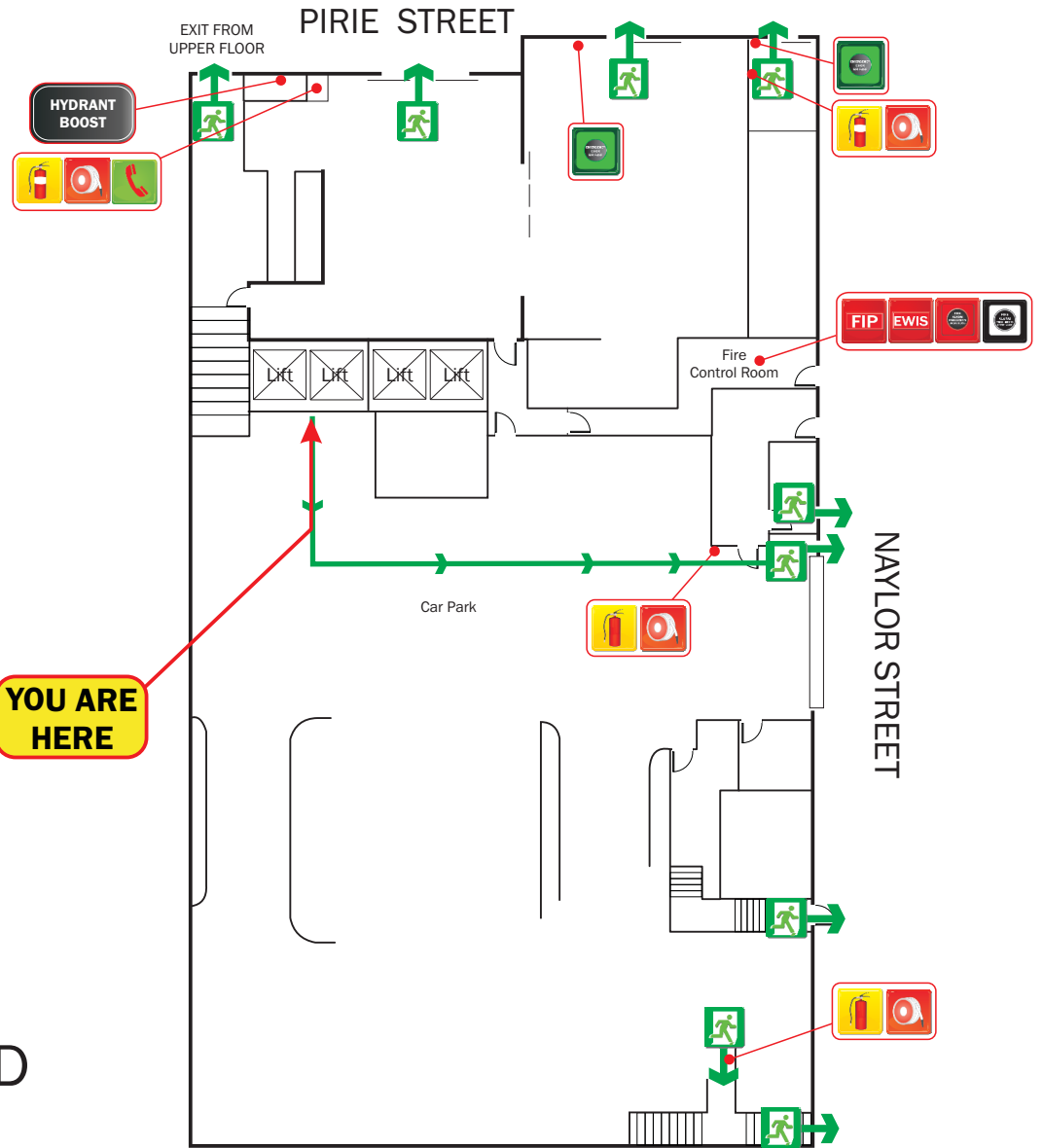
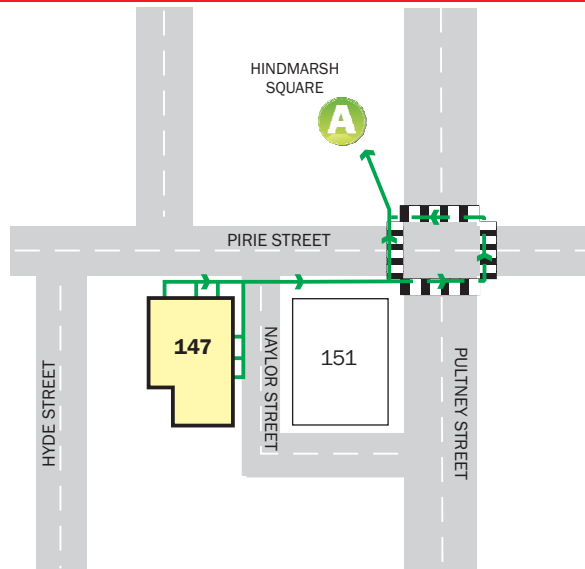
STAGE 2 - REMOVAL TO A SAFE AREA

If the severity of smoke or heat warrants further evacuation, occupants and visitors should be moved to safe areas on the same level.

STAGE 3 - COMPLETE EVACUATION OF THE FLOOR

Should the emergency necessitate evacuation of the affected floor, Wardens are to direct occupants to the assembly area via the emergency exits.

ASSEMBLY AREA



GROUND FLOOR

AURORA ON PIRIE, 147 PIRIE STREET, ADELAIDE



EVACUATION DIAGRAM

first 5 minutes
Experience makes all the difference.



Phone: 1300 321 120
Website: first5minutes.com.au

Issue Date: 1 September 2015
(Valid for a period of 5 years)

Diagrams used on this sign are NOT to scale.

RESPONSE TO AN EMERGENCY

R.A.C.E

Whilst emergencies differ, the RACE procedure offers a set of immediate, generic responses which are easily memorised and appropriate in most circumstances. They are:

- R REMOVE** If safe to do so, remove or rescue any persons in immediate danger.
- A ALERT** Notify appropriate personnel or combatting authority. This usually involves calling the Emergency Number and operating the nearest fire alarm.
- C CONTAIN / CONTROL** Close doors, and if safe to do so, deal with the threat.
- E EVACUATE / EXTINGUISH** Remove all other persons from danger. Evacuate to the Assembly Area and remain there until advised otherwise by the Chief Warden.



STAGES OF EVACUATION

Evacuation should be conducted in three distinct stages depending on the severity of the incident.

STAGE 1 - REMOVAL OF PERSONS FROM THE IMMEDIATE DANGER AREA

Occupants are removed from the affected compartment into the next compartment, eg from a room into a corridor. Doors should be closed to confine smoke and fire in the affected compartment.

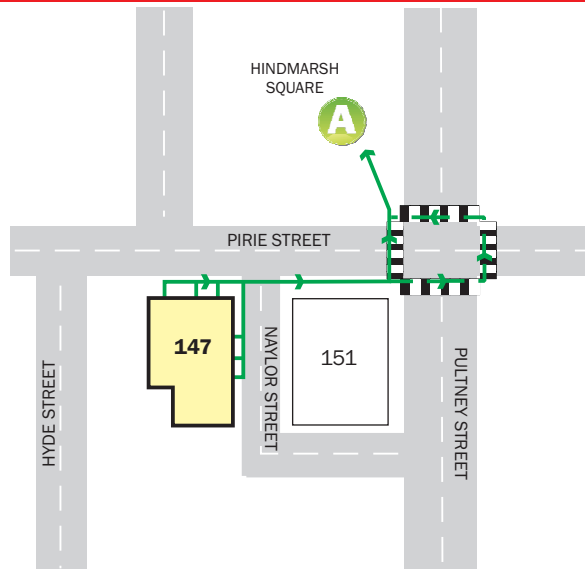
STAGE 2 - REMOVAL TO A SAFE AREA

If the severity of smoke or heat warrants further evacuation, occupants and visitors should be moved to safe areas on the same level.

STAGE 3 - COMPLETE EVACUATION OF THE FLOOR

Should the emergency necessitate evacuation of the affected floor, Wardens are to direct occupants to the assembly area via the emergency exits.

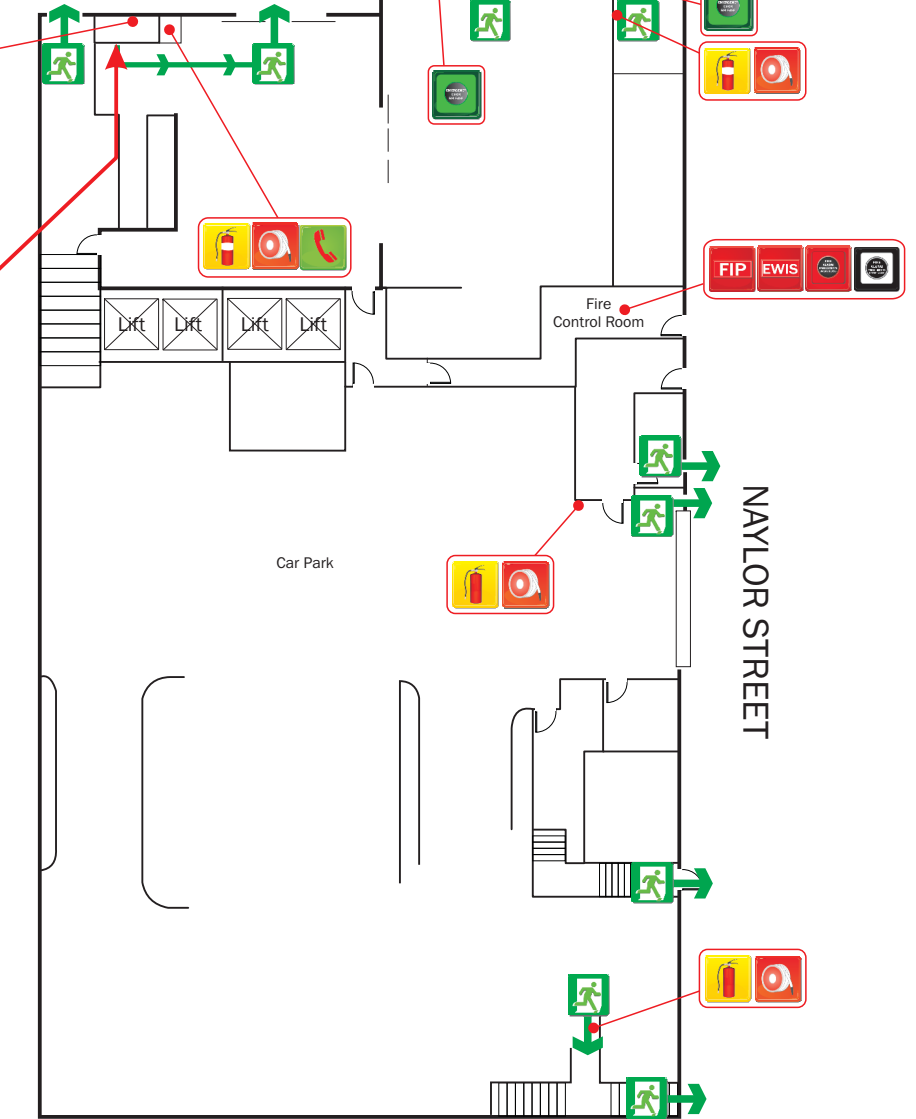
ASSEMBLY AREA



YOU ARE HERE

EXIT FROM UPPER FLOOR
PIRIE STREET

HYDRANT BOOST



GROUND FLOOR

AURORA ON PIRIE, 147 PIRIE STREET, ADELAIDE



EVACUATION DIAGRAM

first 5 minutes
Experience makes all the difference.



Phone: 1300 321 120
Website: first5minutes.com.au

Issue Date: 1 September 2015
(Valid for a period of 5 years)

Diagrams used on this sign are NOT to scale.

RESPONSE TO AN EMERGENCY

R.A.C.E

Whilst emergencies differ, the RACE procedure offers a set of immediate, generic responses which are easily memorised and appropriate in most circumstances. They are:

- R REMOVE** If safe to do so, remove or rescue any persons in immediate danger.
- A ALERT** Notify appropriate personnel or combatting authority. This usually involves calling the Emergency Number and operating the nearest fire alarm.
- C CONTAIN / CONTROL** Close doors, and if safe to do so, deal with the threat.
- E EVACUATE / EXTINGUISH** Remove all other persons from danger. Evacuate to the Assembly Area and remain there until advised otherwise by the Chief Warden.



STAGES OF EVACUATION

Evacuation should be conducted in three distinct stages depending on the severity of the incident.

STAGE 1 - REMOVAL OF PERSONS FROM THE IMMEDIATE DANGER AREA

Occupants are removed from the affected compartment into the next compartment, eg from a room into a corridor. Doors should be closed to confine smoke and fire in the affected compartment.

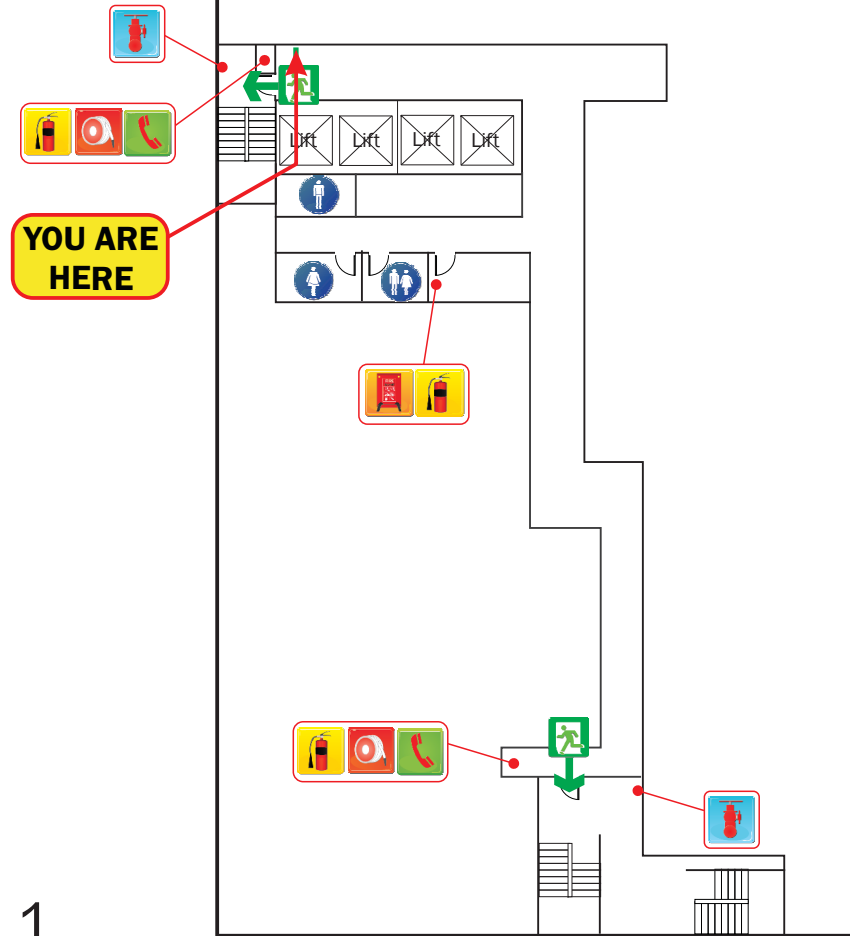
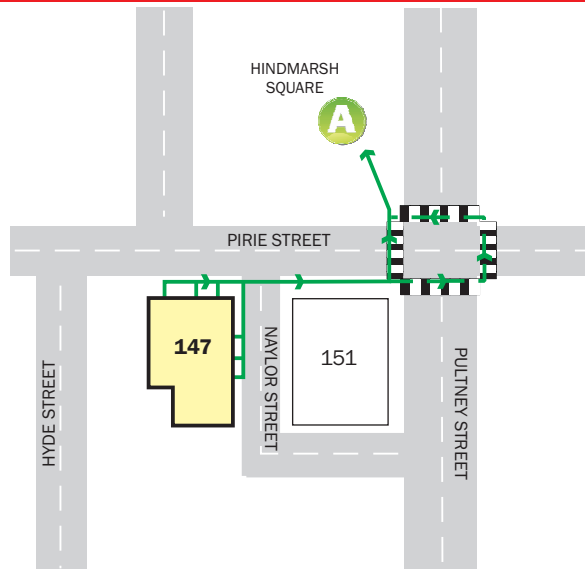
STAGE 2 - REMOVAL TO A SAFE AREA

If the severity of smoke or heat warrants further evacuation, occupants and visitors should be moved to safe areas on the same level.

STAGE 3 - COMPLETE EVACUATION OF THE FLOOR

Should the emergency necessitate evacuation of the affected floor, Wardens are to direct occupants to the assembly area via the emergency exits.

ASSEMBLY AREA



LEVEL 1

AURORA ON PIRIE, 147 PIRIE STREET, ADELAIDE



NAVY STREET

PIRIE STREET

EVACUATION DIAGRAM

first 5 minutes 
Experience makes all the difference.

Phone: 1300 321 120
Website: first5minutes.com.au

Issue Date: 1 September 2015
(Valid for a period of 5 years)

Diagrams used on this sign are NOT to scale.

RESPONSE TO AN EMERGENCY

R.A.C.E

Whilst emergencies differ, the RACE procedure offers a set of immediate, generic responses which are easily memorised and appropriate in most circumstances. They are:

- R REMOVE** If safe to do so, remove or rescue any persons in immediate danger.
- A ALERT** Notify appropriate personnel or combatting authority. This usually involves calling the Emergency Number and operating the nearest fire alarm.
- C CONTAIN / CONTROL** Close doors, and if safe to do so, deal with the threat.
- E EVACUATE / EXTINGUISH** Remove all other persons from danger. Evacuate to the Assembly Area and remain there until advised otherwise by the Chief Warden.



STAGES OF EVACUATION

Evacuation should be conducted in three distinct stages depending on the severity of the incident.

STAGE 1 - REMOVAL OF PERSONS FROM THE IMMEDIATE DANGER AREA

Occupants are removed from the affected compartment into the next compartment, eg from a room into a corridor. Doors should be closed to confine smoke and fire in the affected compartment.

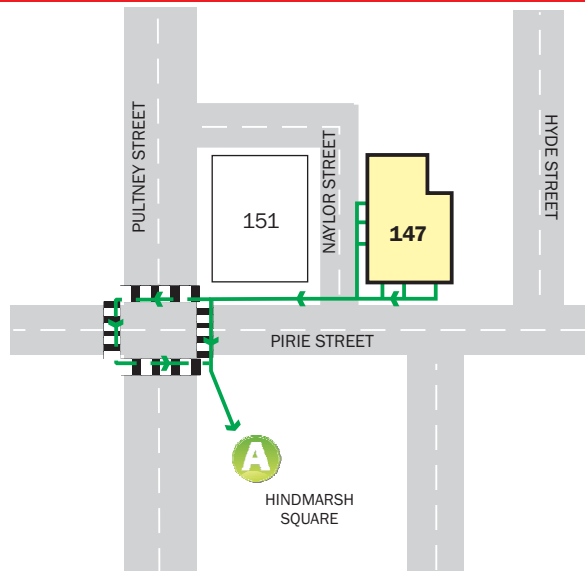
STAGE 2 - REMOVAL TO A SAFE AREA

If the severity of smoke or heat warrants further evacuation, occupants and visitors should be moved to safe areas on the same level.

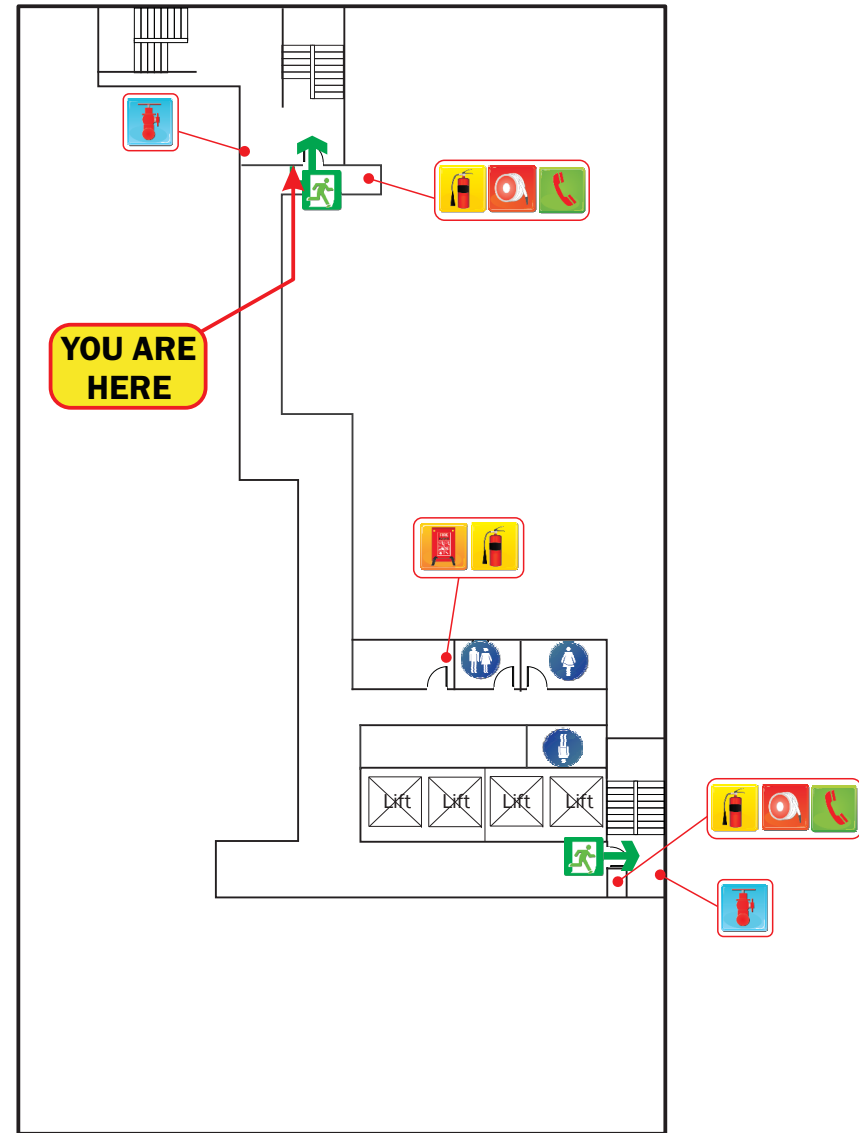
STAGE 3 - COMPLETE EVACUATION OF THE FLOOR

Should the emergency necessitate evacuation of the affected floor, Wardens are to direct occupants to the assembly area via the emergency exits.

ASSEMBLY AREA



NAYLOR STREET



LEVEL 1

PIRIE STREET

AURORA ON PIRIE, 147 PIRIE STREET, ADELAIDE



FIRE HOSE REEL



FIRE BLANKET



CARBON DIOXIDE FIRE EXTINGUISHER



FIRE HYDRANT



WARDEN INTERCOM PHONE



ALTERNATIVE EXIT ROUTE



EXIT ROUTE



ASSEMBLY AREA



EMERGENCY EXIT



N

EVACUATION DIAGRAM

first 5 minutes 
Experience makes all the difference.

Phone: 1300 321 120
Website: first5minutes.com.au

Issue Date: 1 September 2015
(Valid for a period of 5 years)

Diagrams used on this sign are NOT to scale.

RESPONSE TO AN EMERGENCY

R.A.C.E

Whilst emergencies differ, the RACE procedure offers a set of immediate, generic responses which are easily memorised and appropriate in most circumstances. They are:

- R REMOVE** If safe to do so, remove or rescue any persons in immediate danger.
- A ALERT** Notify appropriate personnel or combatting authority. This usually involves calling the Emergency Number and operating the nearest fire alarm.
- C CONTAIN / CONTROL** Close doors, and if safe to do so, deal with the threat.
- E EVACUATE / EXTINGUISH** Remove all other persons from danger. Evacuate to the Assembly Area and remain there until advised otherwise by the Chief Warden.



STAGES OF EVACUATION

Evacuation should be conducted in three distinct stages depending on the severity of the incident.

STAGE 1 - REMOVAL OF PERSONS FROM THE IMMEDIATE DANGER AREA

Occupants are removed from the affected compartment into the next compartment, eg from a room into a corridor. Doors should be closed to confine smoke and fire in the affected compartment.

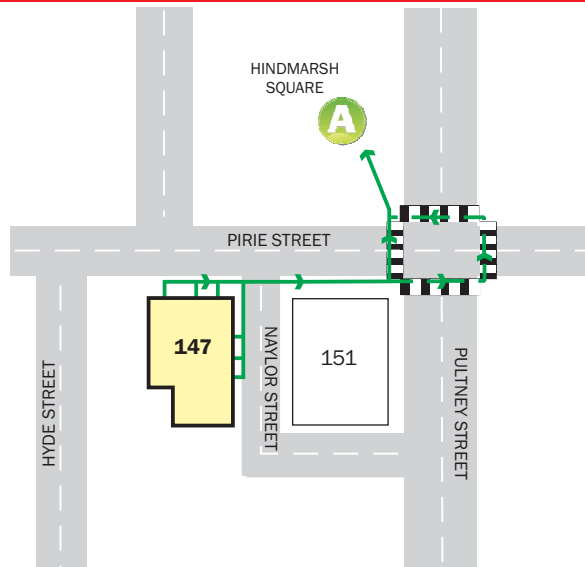
STAGE 2 - REMOVAL TO A SAFE AREA

If the severity of smoke or heat warrants further evacuation, occupants and visitors should be moved to safe areas on the same level.

STAGE 3 - COMPLETE EVACUATION OF THE FLOOR

Should the emergency necessitate evacuation of the affected floor, Wardens are to direct occupants to the assembly area via the emergency exits.

ASSEMBLY AREA



LEVEL 2

AURORA ON PIRIE, 147 PIRIE STREET, ADELAIDE



FIRE HOSE REEL



FIRE BLANKET



CARBON DIOXIDE FIRE EXTINGUISHER



FIRE HYDRANT



WARDEN INTERCOM PHONE



ALTERNATIVE EXIT ROUTE



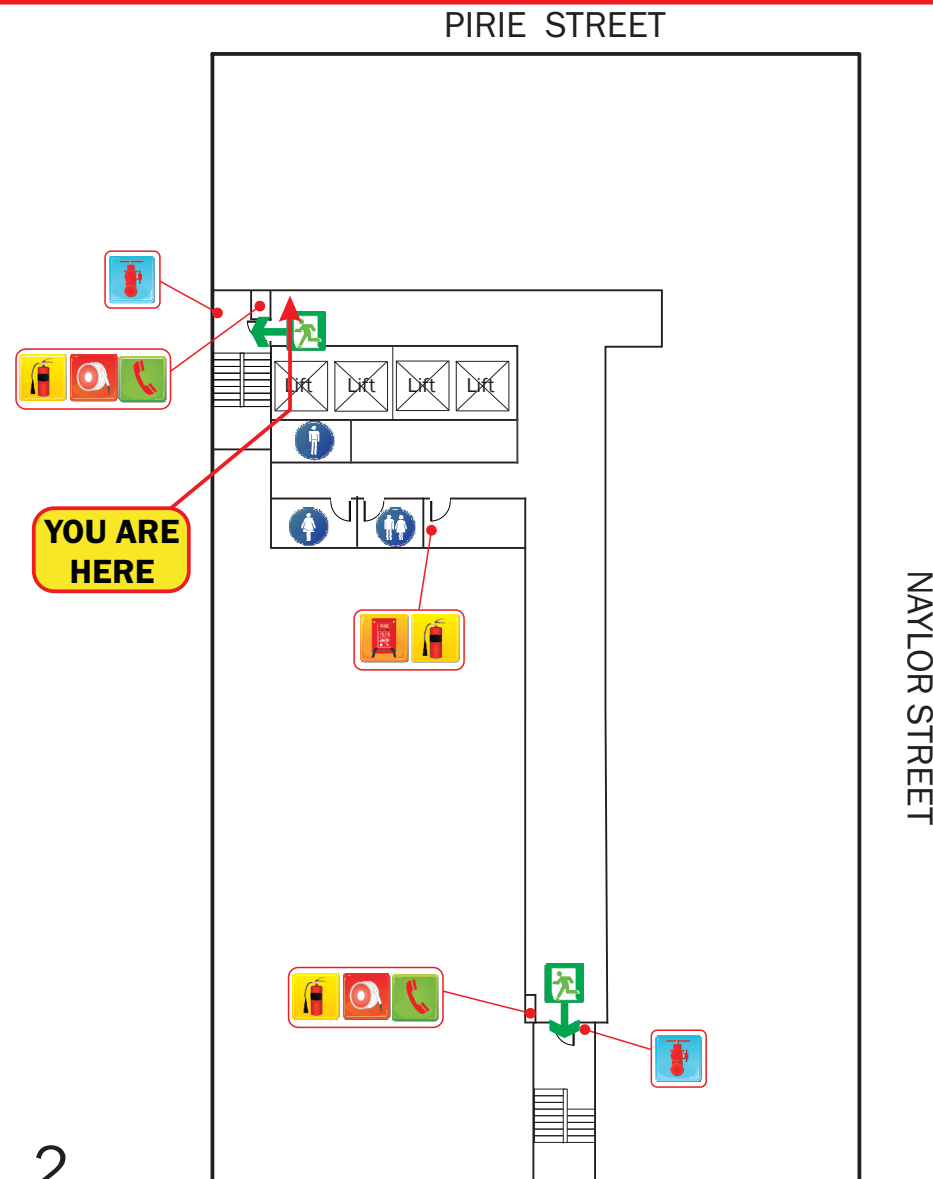
EXIT ROUTE



ASSEMBLY AREA



EMERGENCY EXIT



PIRIE STREET

NAVY LOR STREET

EVACUATION DIAGRAM

first 5 minutes 
Experience makes all the difference.

Phone: 1300 321 120
Website: first5minutes.com.au

Issue Date: 1 September 2015
(Valid for a period of 5 years)

Diagrams used on this sign are NOT to scale.

RESPONSE TO AN EMERGENCY

R.A.C.E

Whilst emergencies differ, the RACE procedure offers a set of immediate, generic responses which are easily memorised and appropriate in most circumstances. They are:

- R REMOVE** If safe to do so, remove or rescue any persons in immediate danger.
- A ALERT** Notify appropriate personnel or combatting authority. This usually involves calling the Emergency Number and operating the nearest fire alarm.
- C CONTAIN / CONTROL** Close doors, and if safe to do so, deal with the threat.
- E EVACUATE / EXTINGUISH** Remove all other persons from danger. Evacuate to the Assembly Area and remain there until advised otherwise by the Chief Warden.



STAGES OF EVACUATION

Evacuation should be conducted in three distinct stages depending on the severity of the incident.

STAGE 1 - REMOVAL OF PERSONS FROM THE IMMEDIATE DANGER AREA

Occupants are removed from the affected compartment into the next compartment, eg from a room into a corridor. Doors should be closed to confine smoke and fire in the affected compartment.

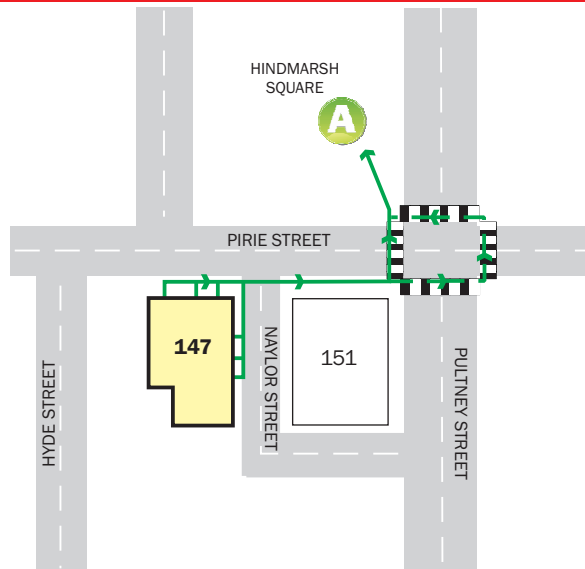
STAGE 2 - REMOVAL TO A SAFE AREA

If the severity of smoke or heat warrants further evacuation, occupants and visitors should be moved to safe areas on the same level.

STAGE 3 - COMPLETE EVACUATION OF THE FLOOR

Should the emergency necessitate evacuation of the affected floor, Wardens are to direct occupants to the assembly area via the emergency exits.

ASSEMBLY AREA



LEVEL 4

AURORA ON PIRIE, 147 PIRIE STREET, ADELAIDE



FIRE HOSE REEL



FIRE BLANKET



CARBON DIOXIDE FIRE EXTINGUISHER



FIRE HYDRANT



WARDEN INTERCOM PHONE



ALTERNATIVE EXIT ROUTE



EXIT ROUTE



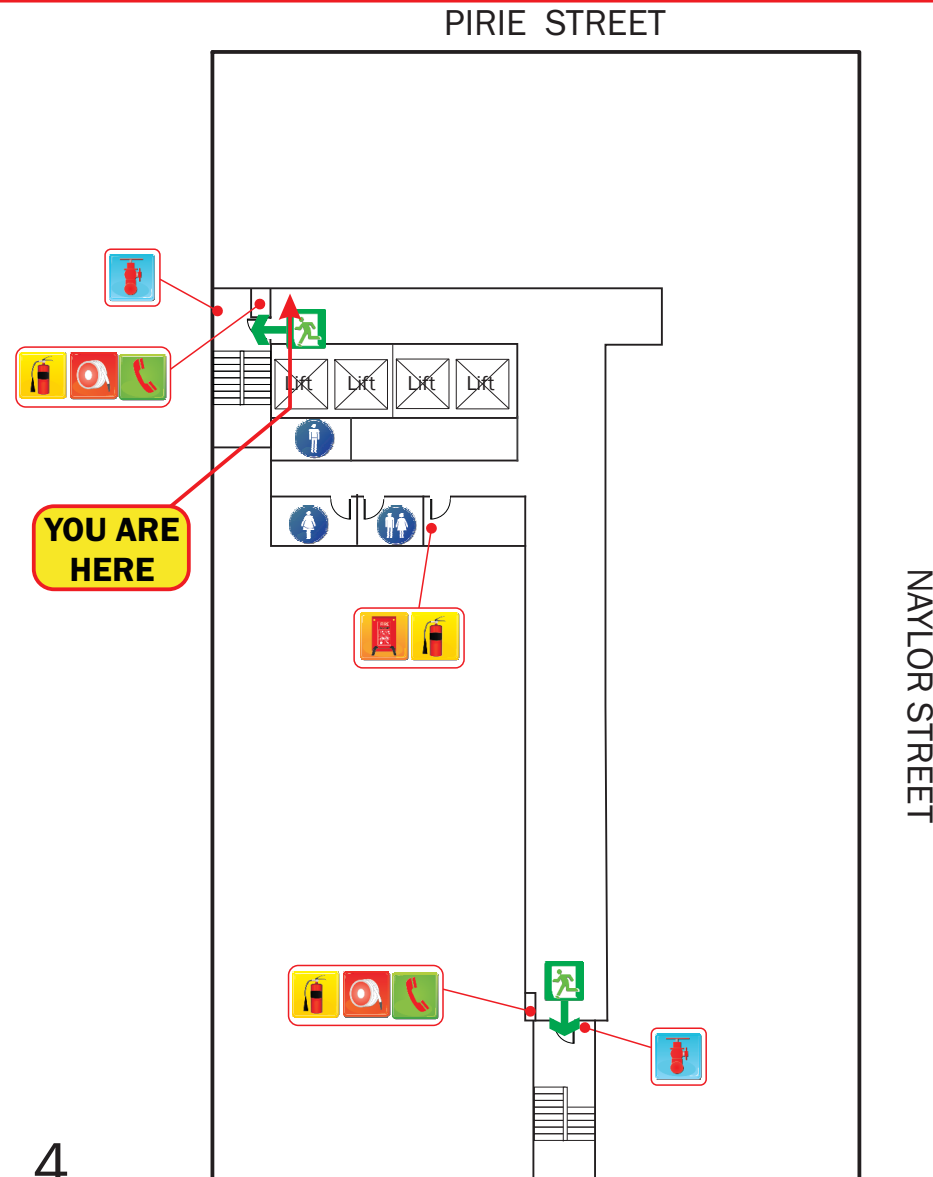
ASSEMBLY AREA



EMERGENCY EXIT



N



EVACUATION DIAGRAM

first 5 minutes 
Experience makes all the difference.

Phone: 1300 321 120
Website: first5minutes.com.au

Issue Date: 1 September 2015
(Valid for a period of 5 years)

Diagrams used on this sign are NOT to scale.

RESPONSE TO AN EMERGENCY

R.A.C.E

Whilst emergencies differ, the RACE procedure offers a set of immediate, generic responses which are easily memorised and appropriate in most circumstances. They are:

- R REMOVE** If safe to do so, remove or rescue any persons in immediate danger.
- A ALERT** Notify appropriate personnel or combatting authority. This usually involves calling the Emergency Number and operating the nearest fire alarm.
- C CONTAIN / CONTROL** Close doors, and if safe to do so, deal with the threat.
- E EVACUATE / EXTINGUISH** Remove all other persons from danger. Evacuate to the Assembly Area and remain there until advised otherwise by the Chief Warden.



STAGES OF EVACUATION

Evacuation should be conducted in three distinct stages depending on the severity of the incident.

STAGE 1 - REMOVAL OF PERSONS FROM THE IMMEDIATE DANGER AREA

Occupants are removed from the affected compartment into the next compartment, eg from a room into a corridor. Doors should be closed to confine smoke and fire in the affected compartment.

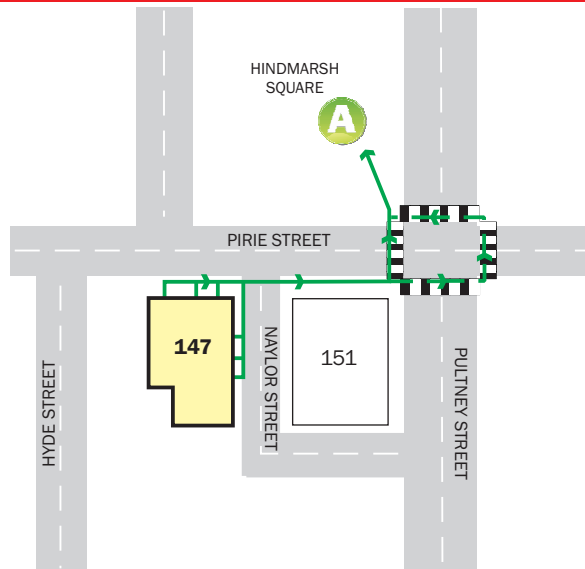
STAGE 2 - REMOVAL TO A SAFE AREA

If the severity of smoke or heat warrants further evacuation, occupants and visitors should be moved to safe areas on the same level.

STAGE 3 - COMPLETE EVACUATION OF THE FLOOR

Should the emergency necessitate evacuation of the affected floor, Wardens are to direct occupants to the assembly area via the emergency exits.

ASSEMBLY AREA



LEVEL 12

AURORA ON PIRIE, 147 PIRIE STREET, ADELAIDE



FIRE HOSE REEL



FIRE BLANKET



CARBON DIOXIDE FIRE EXTINGUISHER



FIRE HYDRANT



WARDEN INTERCOM PHONE



ALTERNATIVE EXIT ROUTE



EXIT ROUTE



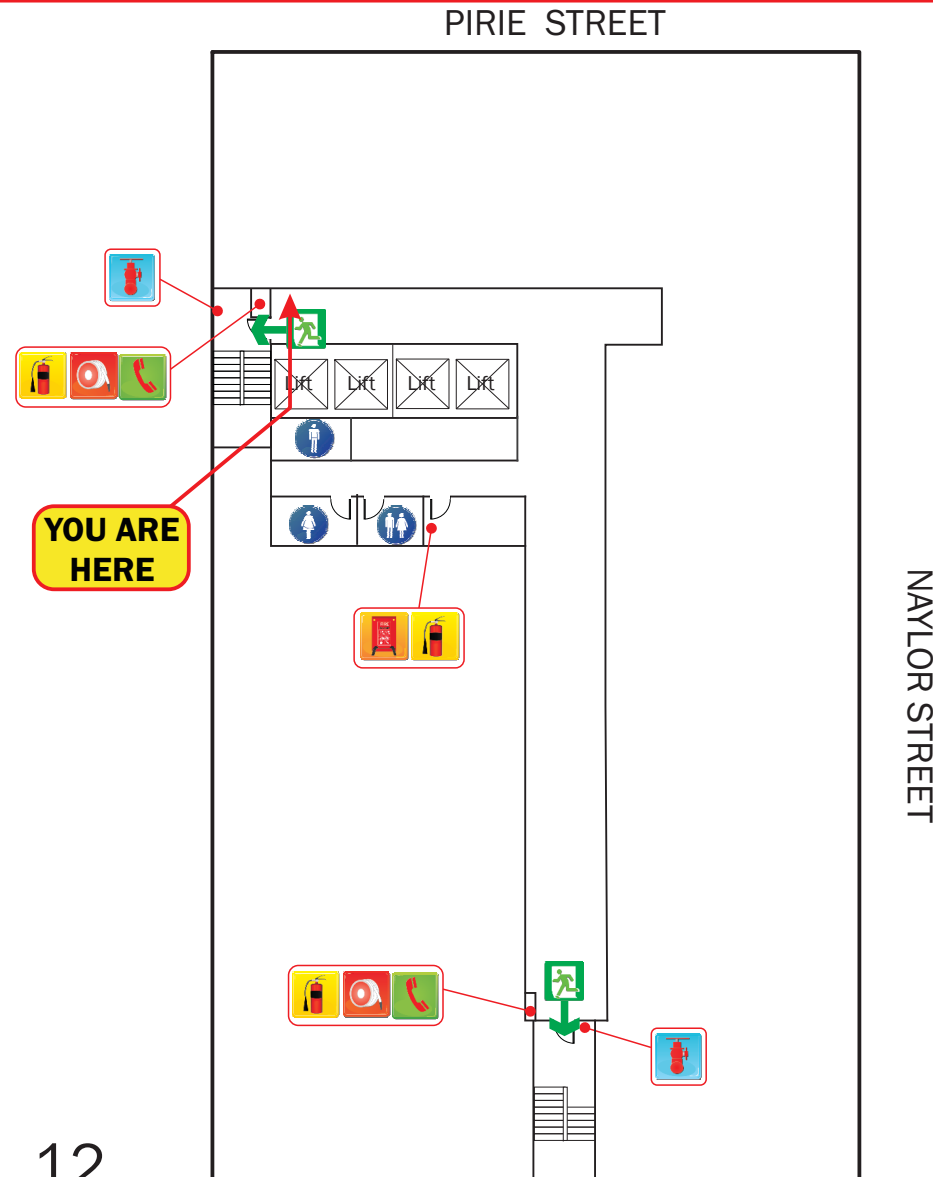
ASSEMBLY AREA



EMERGENCY EXIT



N



EVACUATION DIAGRAM

first 5 minutes
Experience makes all the difference.



Phone: 1300 321 120
Website: first5minutes.com.au

Issue Date: 1 September 2015
(Valid for a period of 5 years)

Diagrams used on this sign are NOT to scale.

RESPONSE TO AN EMERGENCY

R.A.C.E

Whilst emergencies differ, the RACE procedure offers a set of immediate, generic responses which are easily memorised and appropriate in most circumstances. They are:

- R REMOVE** If safe to do so, remove or rescue any persons in immediate danger.
- A ALERT** Notify appropriate personnel or combatting authority. This usually involves calling the Emergency Number and operating the nearest fire alarm.
- C CONTAIN / CONTROL** Close doors, and if safe to do so, deal with the threat.
- E EVACUATE / EXTINGUISH** Remove all other persons from danger. Evacuate to the Assembly Area and remain there until advised otherwise by the Chief Warden.



STAGES OF EVACUATION

Evacuation should be conducted in three distinct stages depending on the severity of the incident.

STAGE 1 - REMOVAL OF PERSONS FROM THE IMMEDIATE DANGER AREA

Occupants are removed from the affected compartment into the next compartment, eg from a room into a corridor. Doors should be closed to confine smoke and fire in the affected compartment.

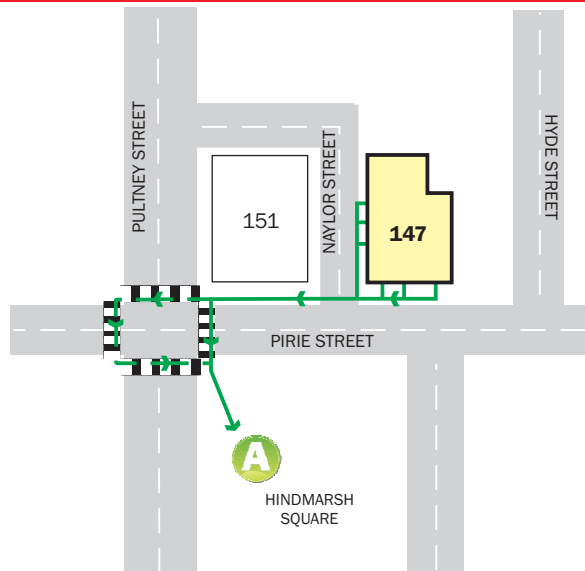
STAGE 2 - REMOVAL TO A SAFE AREA

If the severity of smoke or heat warrants further evacuation, occupants and visitors should be moved to safe areas on the same level.

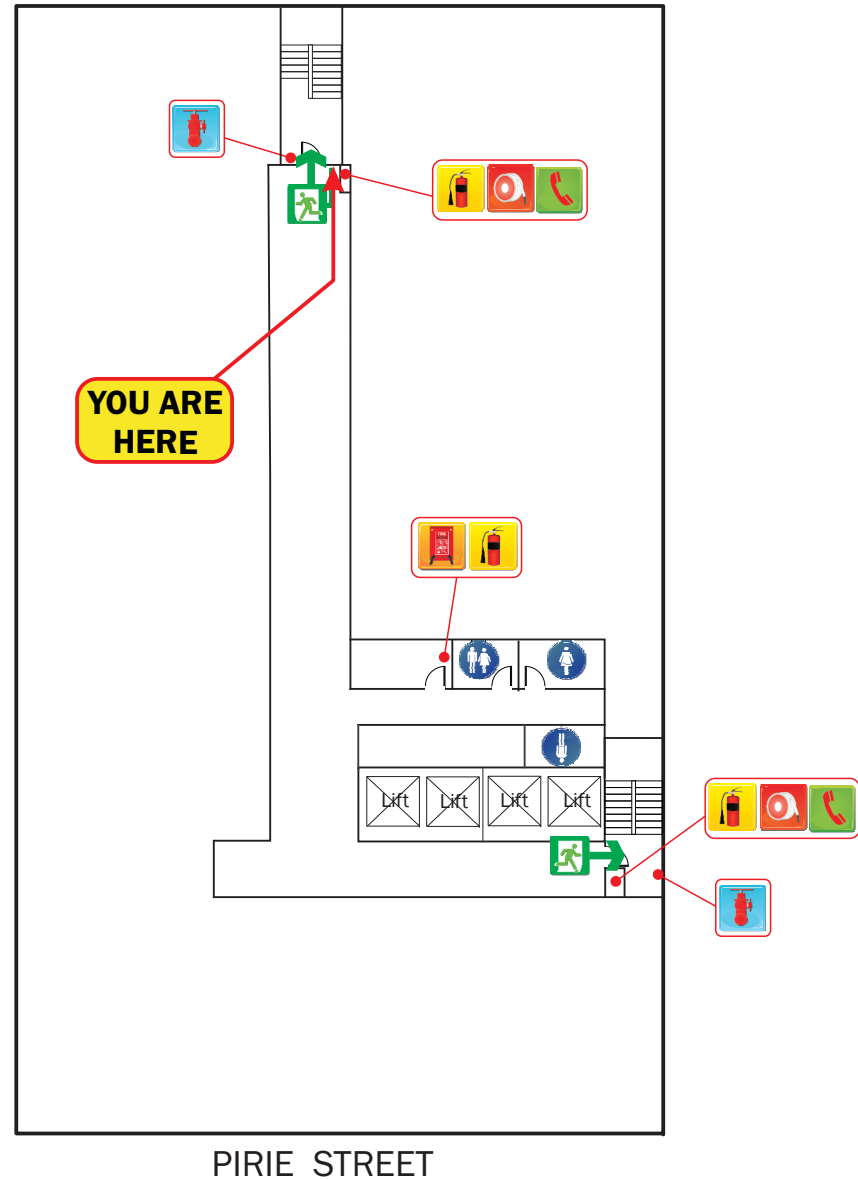
STAGE 3 - COMPLETE EVACUATION OF THE FLOOR

Should the emergency necessitate evacuation of the affected floor, Wardens are to direct occupants to the assembly area via the emergency exits.

ASSEMBLY AREA



NAYLOR STREET



LEVEL 2

AURORA ON PIRIE, 147 PIRIE STREET, ADELAIDE



FIRE HOSE REEL



FIRE BLANKET



CARBON DIOXIDE FIRE EXTINGUISHER



FIRE HYDRANT



WARDEN INTERCOM PHONE



ALTERNATIVE EXIT ROUTE



EXIT ROUTE



ASSEMBLY AREA



EMERGENCY EXIT



N

EVACUATION DIAGRAM

first 5 minutes
Experience makes all the difference.



Phone: 1300 321 120
Website: first5minutes.com.au

Issue Date: 1 September 2015
(Valid for a period of 5 years)

Diagrams used on this sign are NOT to scale.

RESPONSE TO AN EMERGENCY

R.A.C.E

Whilst emergencies differ, the RACE procedure offers a set of immediate, generic responses which are easily memorised and appropriate in most circumstances. They are:

- R REMOVE** If safe to do so, remove or rescue any persons in immediate danger.
- A ALERT** Notify appropriate personnel or combatting authority. This usually involves calling the Emergency Number and operating the nearest fire alarm.
- C CONTAIN / CONTROL** Close doors, and if safe to do so, deal with the threat.
- E EVACUATE / EXTINGUISH** Remove all other persons from danger. Evacuate to the Assembly Area and remain there until advised otherwise by the Chief Warden.



STAGES OF EVACUATION

Evacuation should be conducted in three distinct stages depending on the severity of the incident.

STAGE 1 - REMOVAL OF PERSONS FROM THE IMMEDIATE DANGER AREA

Occupants are removed from the affected compartment into the next compartment, eg from a room into a corridor. Doors should be closed to confine smoke and fire in the affected compartment.

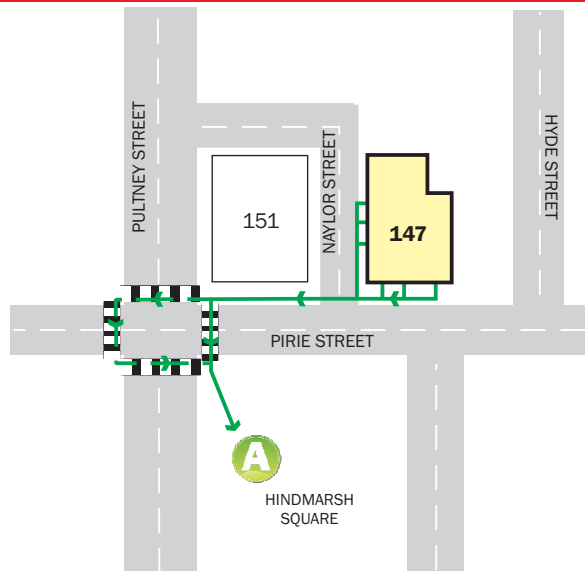
STAGE 2 - REMOVAL TO A SAFE AREA

If the severity of smoke or heat warrants further evacuation, occupants and visitors should be moved to safe areas on the same level.

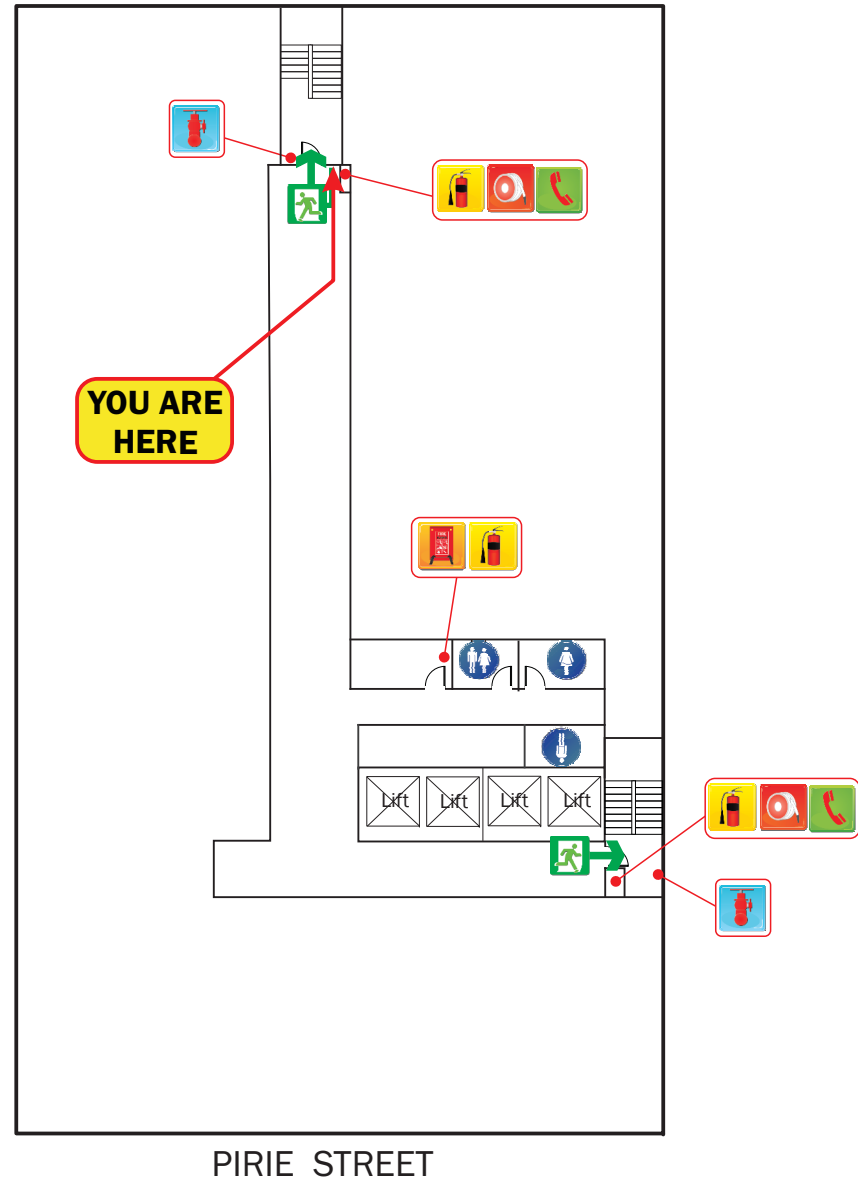
STAGE 3 - COMPLETE EVACUATION OF THE FLOOR

Should the emergency necessitate evacuation of the affected floor, Wardens are to direct occupants to the assembly area via the emergency exits.

ASSEMBLY AREA



NAYLOR STREET



LEVEL 4

AURORA ON PIRIE, 147 PIRIE STREET, ADELAIDE



FIRE HOSE REEL



FIRE BLANKET



CARBON DIOXIDE FIRE EXTINGUISHER



FIRE HYDRANT



WARDEN INTERCOM PHONE



ALTERNATIVE EXIT ROUTE



EXIT ROUTE



ASSEMBLY AREA



EMERGENCY EXIT



N

EVACUATION DIAGRAM

first 5 minutes 
Experience makes all the difference.

Phone: 1300 321 120
Website: first5minutes.com.au

Issue Date: 1 September 2015
(Valid for a period of 5 years)

Diagrams used on this sign are NOT to scale.

RESPONSE TO AN EMERGENCY

R.A.C.E

Whilst emergencies differ, the RACE procedure offers a set of immediate, generic responses which are easily memorised and appropriate in most circumstances. They are:

- R REMOVE** If safe to do so, remove or rescue any persons in immediate danger.
- A ALERT** Notify appropriate personnel or combatting authority. This usually involves calling the Emergency Number and operating the nearest fire alarm.
- C CONTAIN / CONTROL** Close doors, and if safe to do so, deal with the threat.
- E EVACUATE / EXTINGUISH** Remove all other persons from danger. Evacuate to the Assembly Area and remain there until advised otherwise by the Chief Warden.



STAGES OF EVACUATION

Evacuation should be conducted in three distinct stages depending on the severity of the incident.

STAGE 1 - REMOVAL OF PERSONS FROM THE IMMEDIATE DANGER AREA

Occupants are removed from the affected compartment into the next compartment, eg from a room into a corridor. Doors should be closed to confine smoke and fire in the affected compartment.

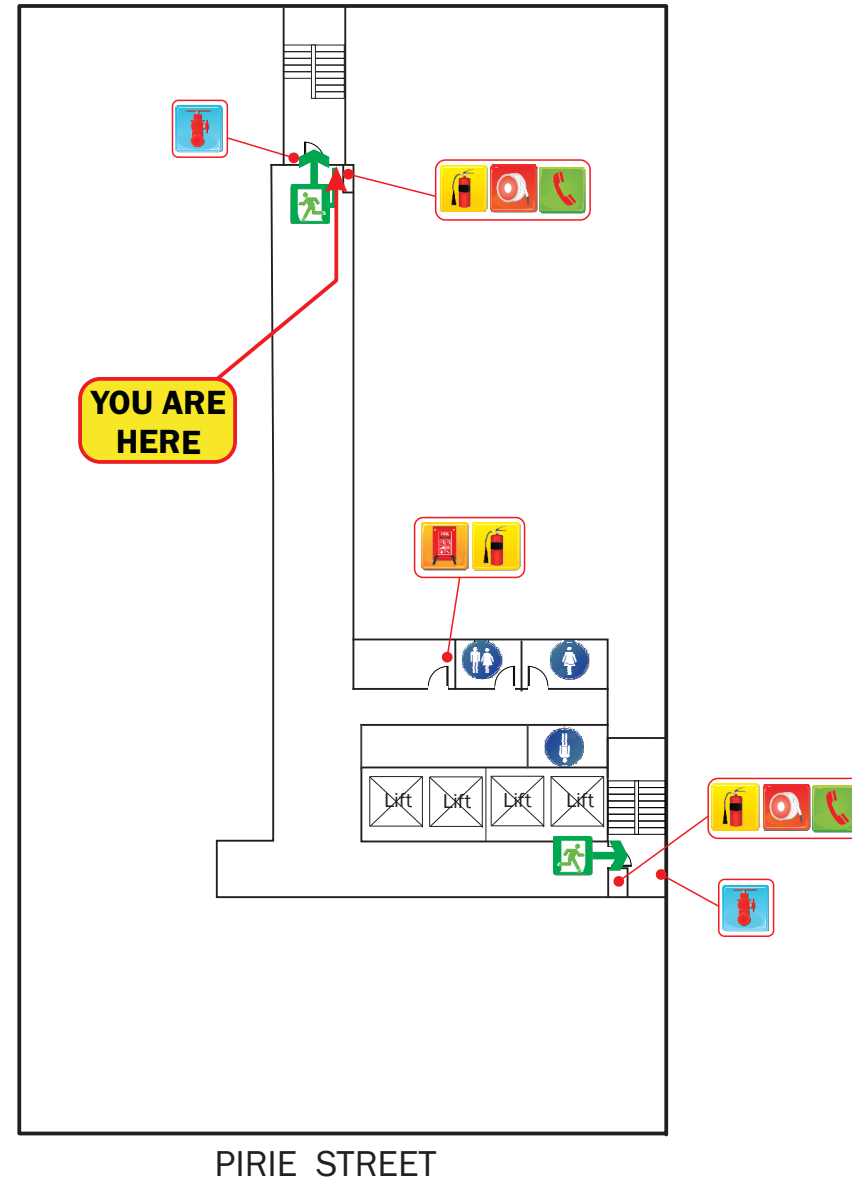
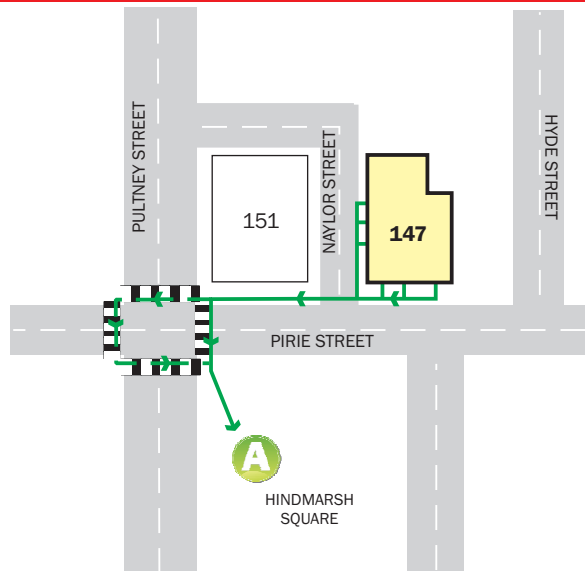
STAGE 2 - REMOVAL TO A SAFE AREA

If the severity of smoke or heat warrants further evacuation, occupants and visitors should be moved to safe areas on the same level.

STAGE 3 - COMPLETE EVACUATION OF THE FLOOR

Should the emergency necessitate evacuation of the affected floor, Wardens are to direct occupants to the assembly area via the emergency exits.

ASSEMBLY AREA



NAYLOR STREET

LEVEL 12

PIRIE STREET

AURORA ON PIRIE, 147 PIRIE STREET, ADELAIDE



FIRE HOSE REEL



FIRE BLANKET



CARBON DIOXIDE FIRE EXTINGUISHER



FIRE HYDRANT



WARDEN INTERCOM PHONE



ALTERNATIVE EXIT ROUTE



EXIT ROUTE



ASSEMBLY AREA



EMERGENCY EXIT



N

EVACUATION DIAGRAM

first 5 minutes 
Experience makes all the difference.

Phone: 1300 321 120
Website: first5minutes.com.au

Issue Date: 1 September 2015
(Valid for a period of 5 years)

Diagrams used on this sign are NOT to scale.

RESPONSE TO AN EMERGENCY

R.A.C.E

Whilst emergencies differ, the RACE procedure offers a set of immediate, generic responses which are easily memorised and appropriate in most circumstances. They are:

- R REMOVE** If safe to do so, remove or rescue any persons in immediate danger.
- A ALERT** Notify appropriate personnel or combatting authority. This usually involves calling the Emergency Number and operating the nearest fire alarm.
- C CONTAIN / CONTROL** Close doors, and if safe to do so, deal with the threat.
- E EVACUATE / EXTINGUISH** Remove all other persons from danger. Evacuate to the Assembly Area and remain there until advised otherwise by the Chief Warden.



STAGES OF EVACUATION

Evacuation should be conducted in three distinct stages depending on the severity of the incident.

STAGE 1 - REMOVAL OF PERSONS FROM THE IMMEDIATE DANGER AREA

Occupants are removed from the affected compartment into the next compartment, eg from a room into a corridor. Doors should be closed to confine smoke and fire in the affected compartment.

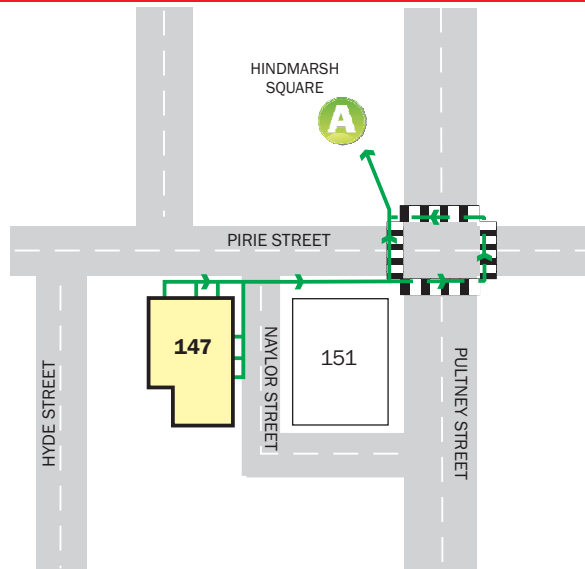
STAGE 2 - REMOVAL TO A SAFE AREA

If the severity of smoke or heat warrants further evacuation, occupants and visitors should be moved to safe areas on the same level.

STAGE 3 - COMPLETE EVACUATION OF THE FLOOR

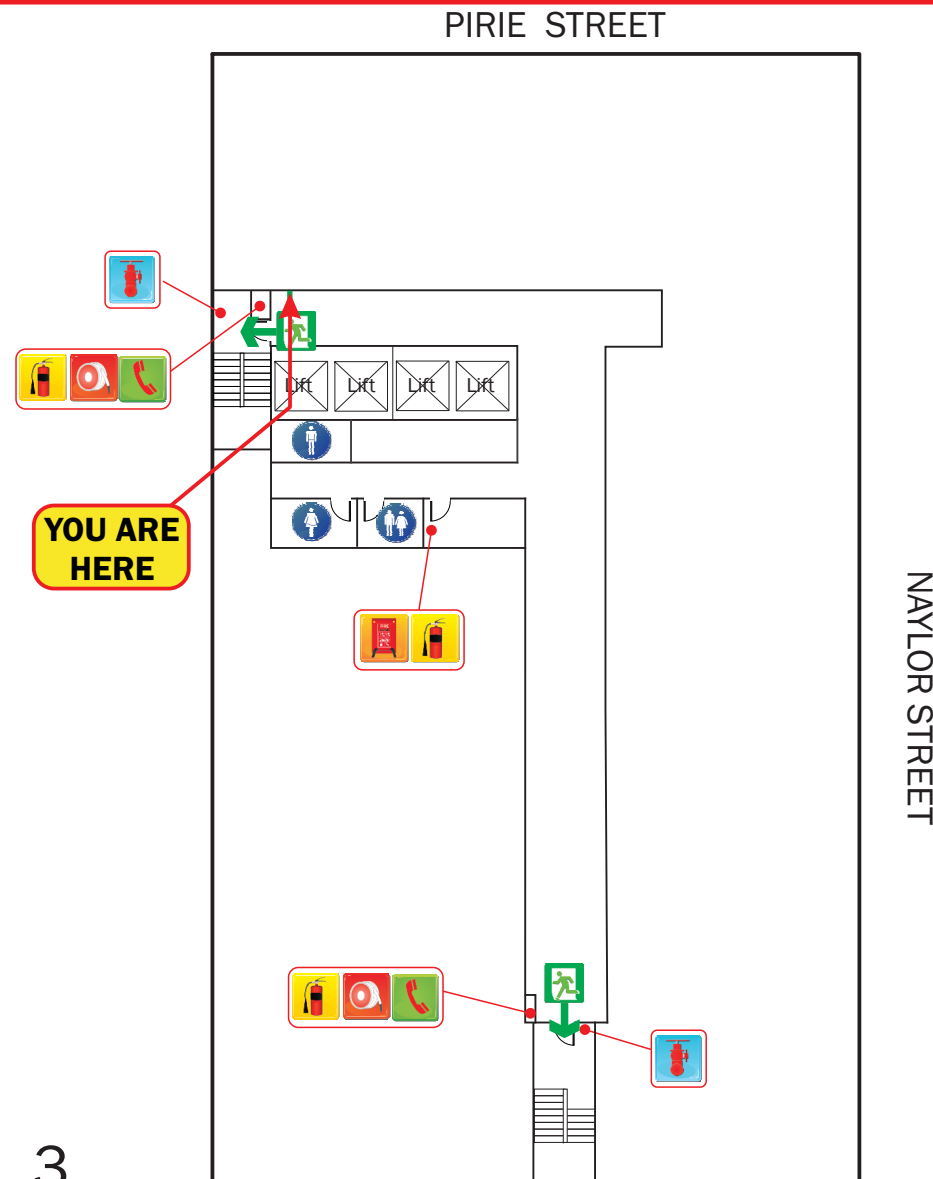
Should the emergency necessitate evacuation of the affected floor, Wardens are to direct occupants to the assembly area via the emergency exits.

ASSEMBLY AREA



LEVEL 3

AURORA ON PIRIE, 147 PIRIE STREET, ADELAIDE



FIRE HOSE REEL



FIRE BLANKET



CARBON DIOXIDE FIRE EXTINGUISHER



FIRE HYDRANT



WARDEN INTERCOM PHONE



ALTERNATIVE EXIT ROUTE



EXIT ROUTE



ASSEMBLY AREA



EMERGENCY EXIT



N

NAVY STREET

PIRIE STREET

EVACUATION DIAGRAM

first 5 minutes 
Experience makes all the difference.

Phone: 1300 321 120
Website: first5minutes.com.au

Issue Date: 1 September 2015
(Valid for a period of 5 years)

Diagrams used on this sign are NOT to scale.

RESPONSE TO AN EMERGENCY

R.A.C.E

Whilst emergencies differ, the RACE procedure offers a set of immediate, generic responses which are easily memorised and appropriate in most circumstances. They are:

- R REMOVE** If safe to do so, remove or rescue any persons in immediate danger.
- A ALERT** Notify appropriate personnel or combatting authority. This usually involves calling the Emergency Number and operating the nearest fire alarm.
- C CONTAIN / CONTROL** Close doors, and if safe to do so, deal with the threat.
- E EVACUATE / EXTINGUISH** Remove all other persons from danger. Evacuate to the Assembly Area and remain there until advised otherwise by the Chief Warden.



STAGES OF EVACUATION

Evacuation should be conducted in three distinct stages depending on the severity of the incident.

STAGE 1 - REMOVAL OF PERSONS FROM THE IMMEDIATE DANGER AREA

Occupants are removed from the affected compartment into the next compartment, eg from a room into a corridor. Doors should be closed to confine smoke and fire in the affected compartment.

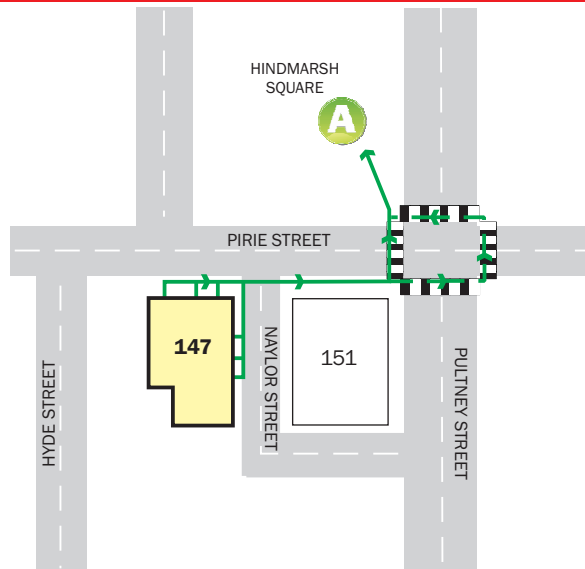
STAGE 2 - REMOVAL TO A SAFE AREA

If the severity of smoke or heat warrants further evacuation, occupants and visitors should be moved to safe areas on the same level.

STAGE 3 - COMPLETE EVACUATION OF THE FLOOR

Should the emergency necessitate evacuation of the affected floor, Wardens are to direct occupants to the assembly area via the emergency exits.

ASSEMBLY AREA



LEVEL 5

AURORA ON PIRIE, 147 PIRIE STREET, ADELAIDE



FIRE HOSE REEL



FIRE BLANKET



CARBON DIOXIDE FIRE EXTINGUISHER



FIRE HYDRANT



WARDEN INTERCOM PHONE



ALTERNATIVE EXIT ROUTE



EXIT ROUTE



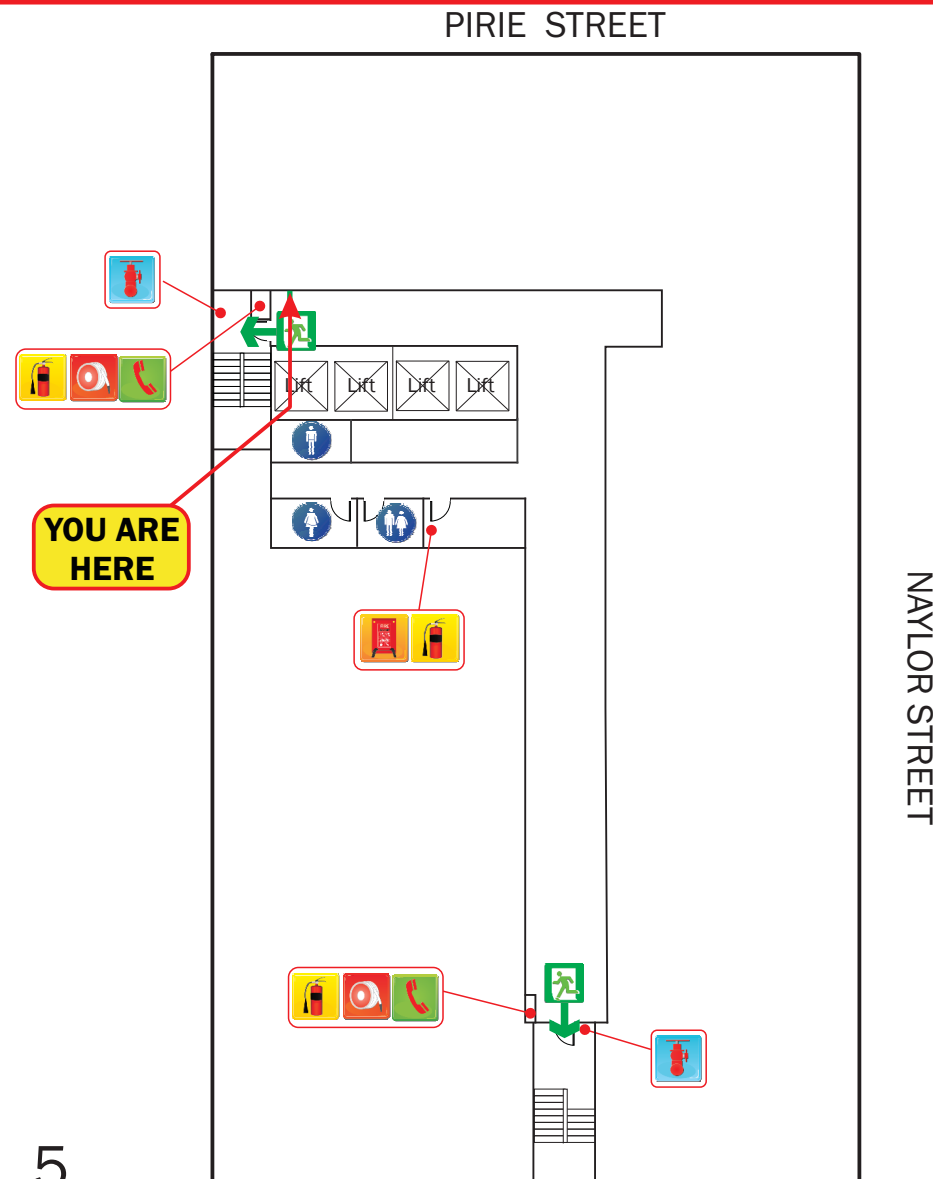
ASSEMBLY AREA



EMERGENCY EXIT



N



EVACUATION DIAGRAM

first 5 minutes 
Experience makes all the difference.

Phone: 1300 321 120
Website: first5minutes.com.au

Issue Date: 1 September 2015
(Valid for a period of 5 years)

Diagrams used on this sign are NOT to scale.

RESPONSE TO AN EMERGENCY

R.A.C.E

Whilst emergencies differ, the RACE procedure offers a set of immediate, generic responses which are easily memorised and appropriate in most circumstances. They are:

- R REMOVE** If safe to do so, remove or rescue any persons in immediate danger.
- A ALERT** Notify appropriate personnel or combatting authority. This usually involves calling the Emergency Number and operating the nearest fire alarm.
- C CONTAIN / CONTROL** Close doors, and if safe to do so, deal with the threat.
- E EVACUATE / EXTINGUISH** Remove all other persons from danger. Evacuate to the Assembly Area and remain there until advised otherwise by the Chief Warden.



STAGES OF EVACUATION

Evacuation should be conducted in three distinct stages depending on the severity of the incident.

STAGE 1 - REMOVAL OF PERSONS FROM THE IMMEDIATE DANGER AREA

Occupants are removed from the affected compartment into the next compartment, eg from a room into a corridor. Doors should be closed to confine smoke and fire in the affected compartment.

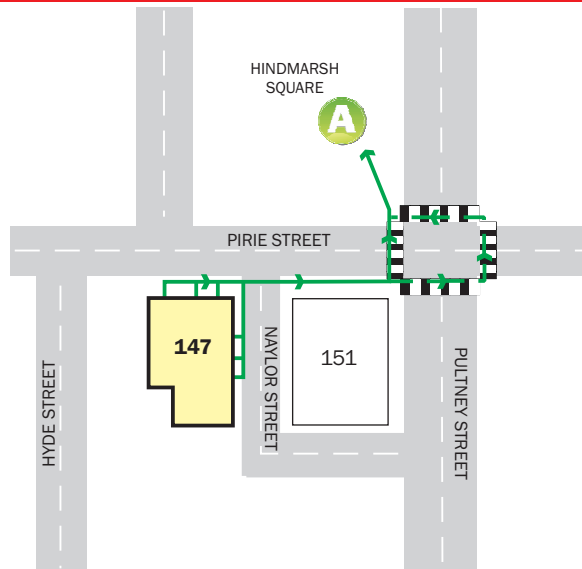
STAGE 2 - REMOVAL TO A SAFE AREA

If the severity of smoke or heat warrants further evacuation, occupants and visitors should be moved to safe areas on the same level.

STAGE 3 - COMPLETE EVACUATION OF THE FLOOR

Should the emergency necessitate evacuation of the affected floor, Wardens are to direct occupants to the assembly area via the emergency exits.

ASSEMBLY AREA



LEVEL 6

AURORA ON PIRIE, 147 PIRIE STREET, ADELAIDE



FIRE HOSE REEL



FIRE BLANKET



CARBON DIOXIDE FIRE EXTINGUISHER



FIRE HYDRANT



WARDEN INTERCOM PHONE



ALTERNATIVE EXIT ROUTE



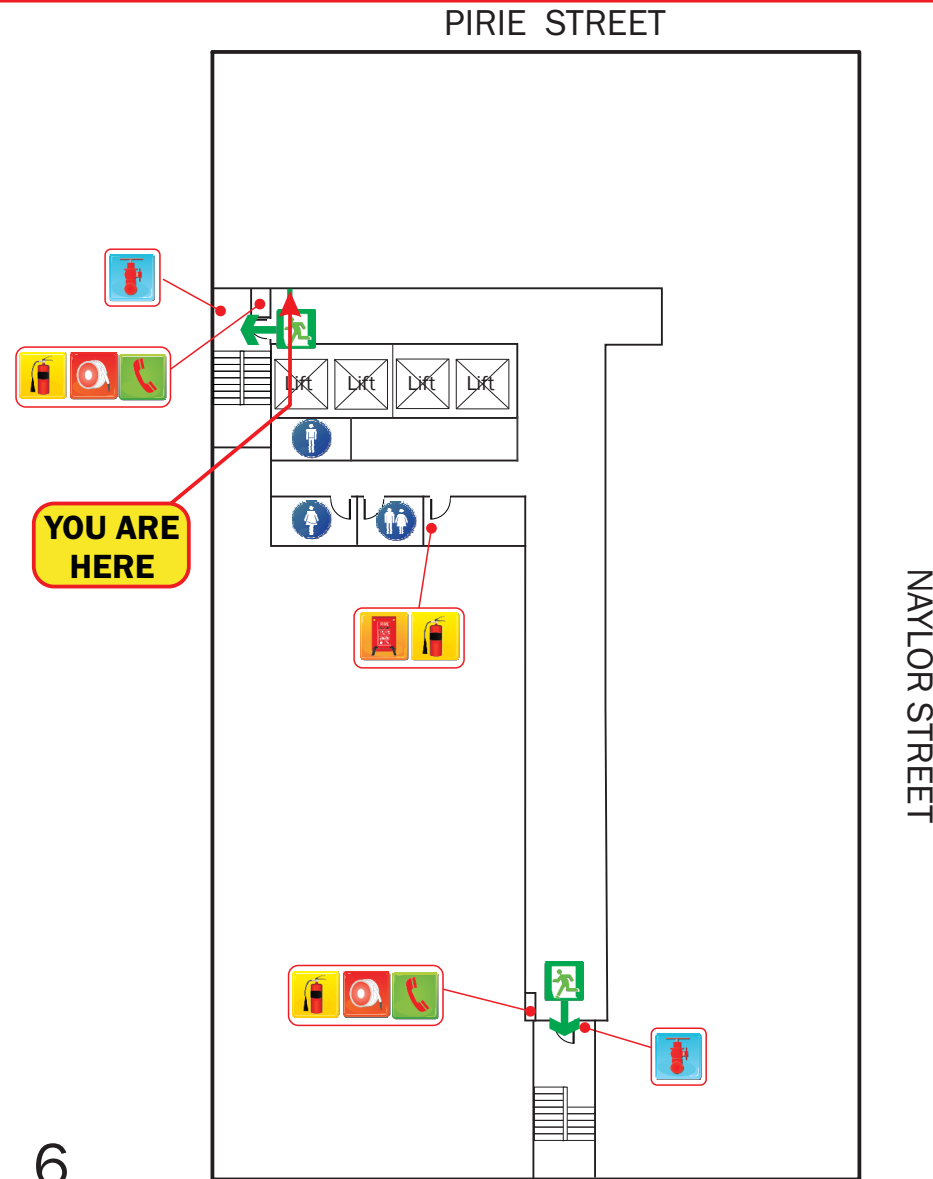
EXIT ROUTE



ASSEMBLY AREA



EMERGENCY EXIT



EVACUATION DIAGRAM

first 5 minutes 
Experience makes all the difference.

Phone: 1300 321 120
Website: first5minutes.com.au

Issue Date: 1 September 2015
(Valid for a period of 5 years)

Diagrams used on this sign are NOT to scale.

RESPONSE TO AN EMERGENCY

R.A.C.E

Whilst emergencies differ, the RACE procedure offers a set of immediate, generic responses which are easily memorised and appropriate in most circumstances. They are:

- R REMOVE** If safe to do so, remove or rescue any persons in immediate danger.
- A ALERT** Notify appropriate personnel or combatting authority. This usually involves calling the Emergency Number and operating the nearest fire alarm.
- C CONTAIN / CONTROL** Close doors, and if safe to do so, deal with the threat.
- E EVACUATE / EXTINGUISH** Remove all other persons from danger. Evacuate to the Assembly Area and remain there until advised otherwise by the Chief Warden.



STAGES OF EVACUATION

Evacuation should be conducted in three distinct stages depending on the severity of the incident.

STAGE 1 - REMOVAL OF PERSONS FROM THE IMMEDIATE DANGER AREA

Occupants are removed from the affected compartment into the next compartment, eg from a room into a corridor. Doors should be closed to confine smoke and fire in the affected compartment.

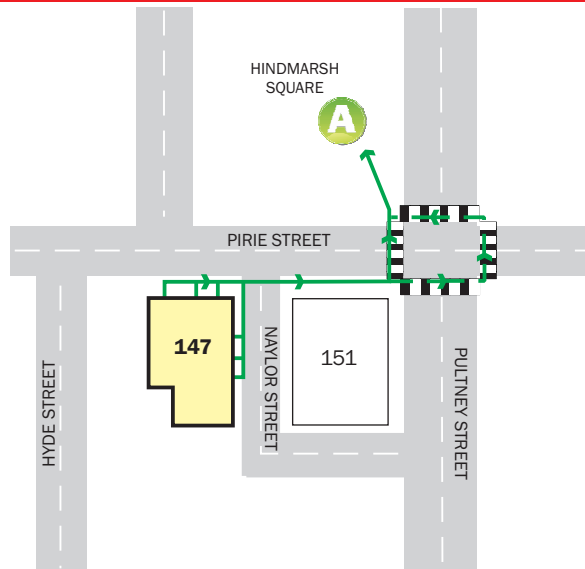
STAGE 2 - REMOVAL TO A SAFE AREA

If the severity of smoke or heat warrants further evacuation, occupants and visitors should be moved to safe areas on the same level.

STAGE 3 - COMPLETE EVACUATION OF THE FLOOR

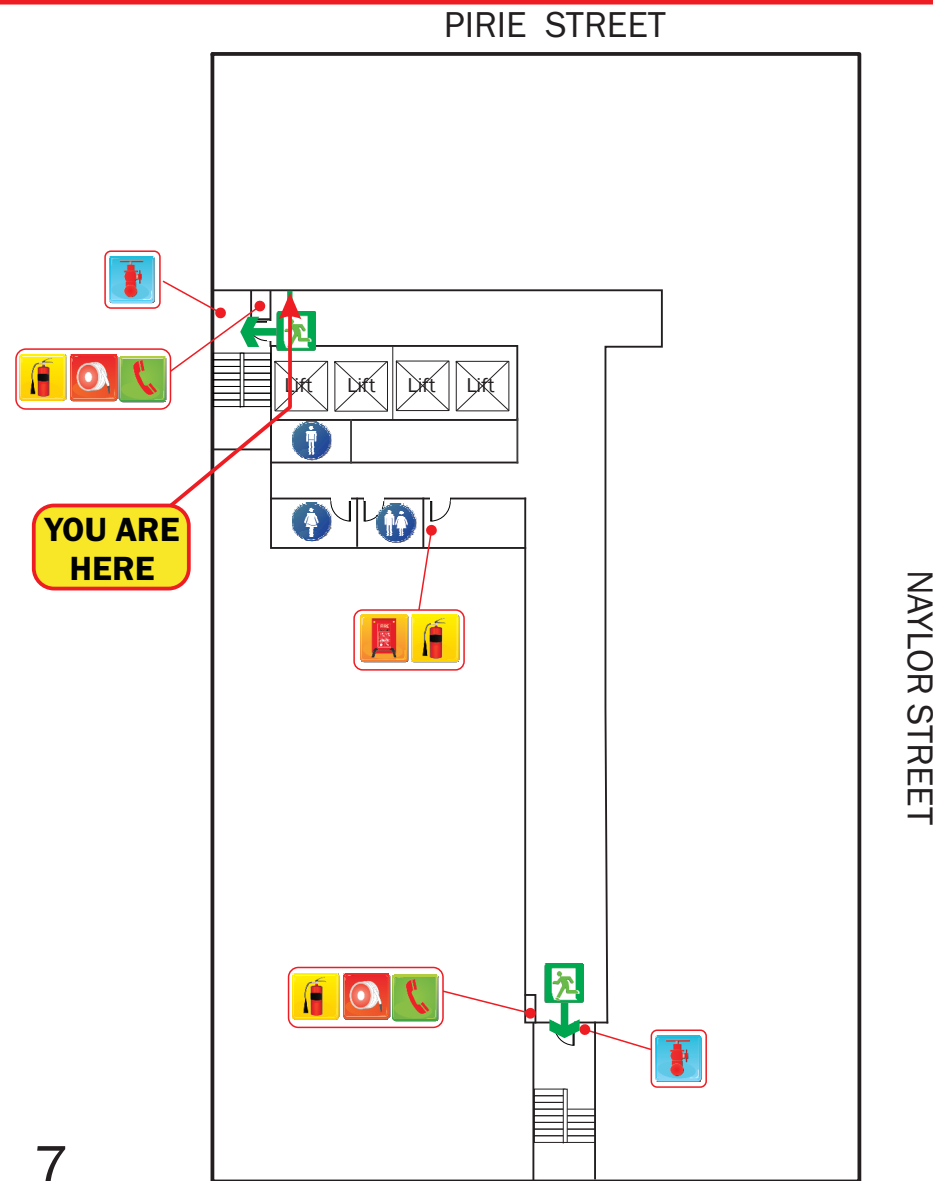
Should the emergency necessitate evacuation of the affected floor, Wardens are to direct occupants to the assembly area via the emergency exits.

ASSEMBLY AREA



LEVEL 7

AURORA ON PIRIE, 147 PIRIE STREET, ADELAIDE



FIRE HOSE REEL



FIRE BLANKET



CARBON DIOXIDE FIRE EXTINGUISHER



FIRE HYDRANT



WARDEN INTERCOM PHONE



ALTERNATIVE EXIT ROUTE



EXIT ROUTE



ASSEMBLY AREA



EMERGENCY EXIT



N

EVACUATION DIAGRAM

first 5 minutes 
Experience makes all the difference.

Phone: 1300 321 120
Website: first5minutes.com.au

Issue Date: 1 September 2015
(Valid for a period of 5 years)

Diagrams used on this sign are NOT to scale.

RESPONSE TO AN EMERGENCY

R.A.C.E

Whilst emergencies differ, the RACE procedure offers a set of immediate, generic responses which are easily memorised and appropriate in most circumstances. They are:

- R REMOVE** If safe to do so, remove or rescue any persons in immediate danger.
- A ALERT** Notify appropriate personnel or combatting authority. This usually involves calling the Emergency Number and operating the nearest fire alarm.
- C CONTAIN / CONTROL** Close doors, and if safe to do so, deal with the threat.
- E EVACUATE / EXTINGUISH** Remove all other persons from danger. Evacuate to the Assembly Area and remain there until advised otherwise by the Chief Warden.



STAGES OF EVACUATION

Evacuation should be conducted in three distinct stages depending on the severity of the incident.

STAGE 1 - REMOVAL OF PERSONS FROM THE IMMEDIATE DANGER AREA

Occupants are removed from the affected compartment into the next compartment, eg from a room into a corridor. Doors should be closed to confine smoke and fire in the affected compartment.

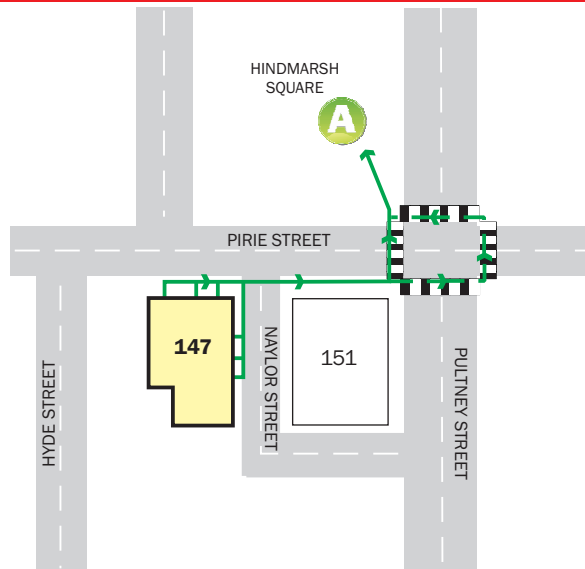
STAGE 2 - REMOVAL TO A SAFE AREA

If the severity of smoke or heat warrants further evacuation, occupants and visitors should be moved to safe areas on the same level.

STAGE 3 - COMPLETE EVACUATION OF THE FLOOR

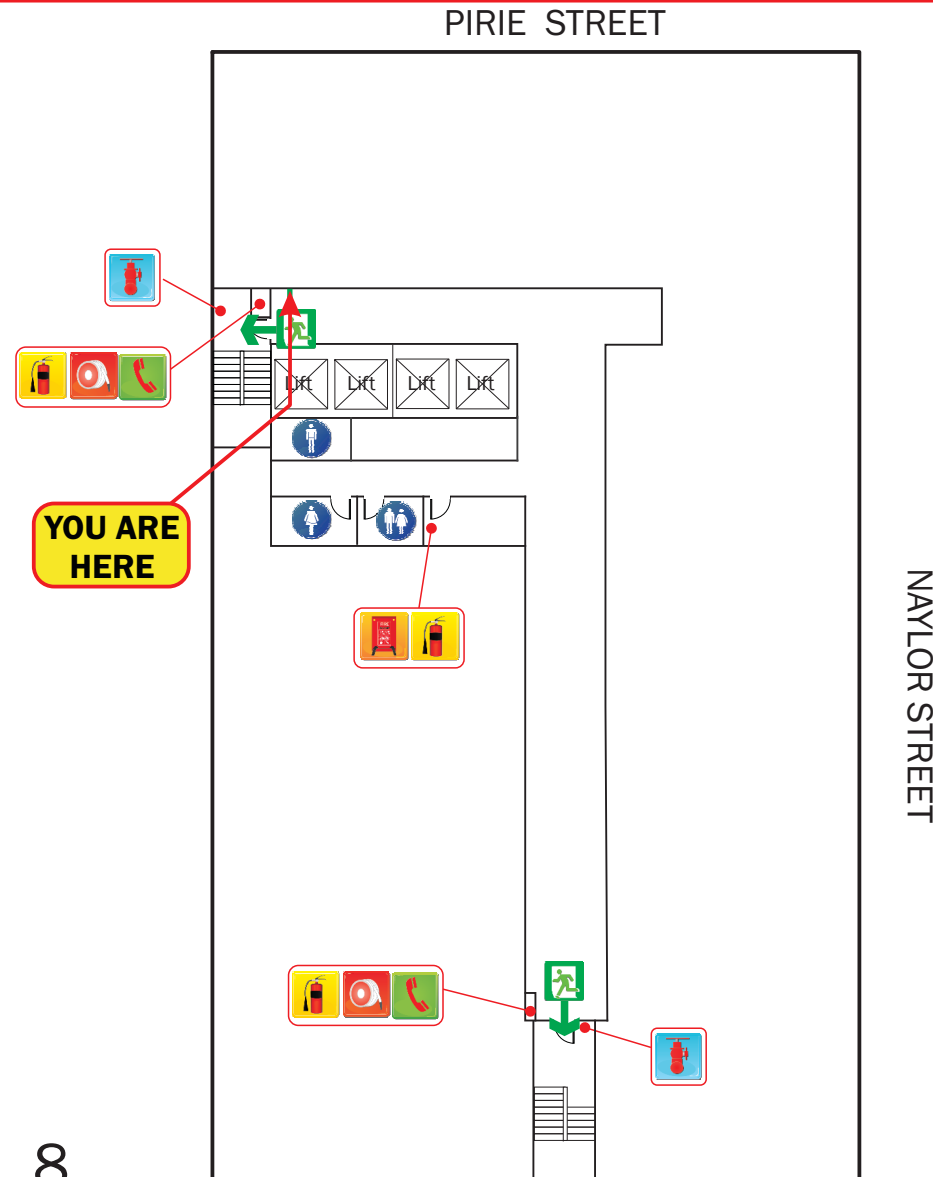
Should the emergency necessitate evacuation of the affected floor, Wardens are to direct occupants to the assembly area via the emergency exits.

ASSEMBLY AREA



LEVEL 8

AURORA ON PIRIE, 147 PIRIE STREET, ADELAIDE



FIRE HOSE REEL



FIRE BLANKET



CARBON DIOXIDE FIRE EXTINGUISHER



FIRE HYDRANT



WARDEN INTERCOM PHONE



ALTERNATIVE EXIT ROUTE



EXIT ROUTE



ASSEMBLY AREA



EMERGENCY EXIT



N

NAVY LOR STREET

PIRIE STREET

EVACUATION DIAGRAM

first 5 minutes 
Experience makes all the difference.

Phone: 1300 321 120
Website: first5minutes.com.au

Issue Date: 1 September 2015
(Valid for a period of 5 years)

Diagrams used on this sign are NOT to scale.

RESPONSE TO AN EMERGENCY

R.A.C.E

Whilst emergencies differ, the RACE procedure offers a set of immediate, generic responses which are easily memorised and appropriate in most circumstances. They are:

- R REMOVE** If safe to do so, remove or rescue any persons in immediate danger.
- A ALERT** Notify appropriate personnel or combatting authority. This usually involves calling the Emergency Number and operating the nearest fire alarm.
- C CONTAIN / CONTROL** Close doors, and if safe to do so, deal with the threat.
- E EVACUATE / EXTINGUISH** Remove all other persons from danger. Evacuate to the Assembly Area and remain there until advised otherwise by the Chief Warden.



STAGES OF EVACUATION

Evacuation should be conducted in three distinct stages depending on the severity of the incident.

STAGE 1 - REMOVAL OF PERSONS FROM THE IMMEDIATE DANGER AREA

Occupants are removed from the affected compartment into the next compartment, eg from a room into a corridor. Doors should be closed to confine smoke and fire in the affected compartment.

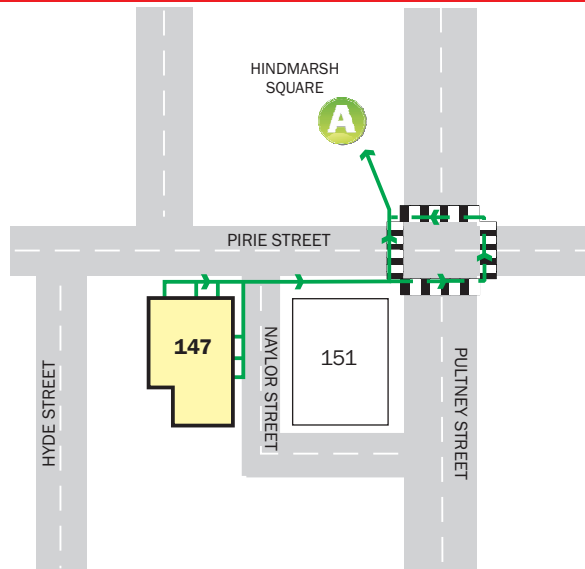
STAGE 2 - REMOVAL TO A SAFE AREA

If the severity of smoke or heat warrants further evacuation, occupants and visitors should be moved to safe areas on the same level.

STAGE 3 - COMPLETE EVACUATION OF THE FLOOR

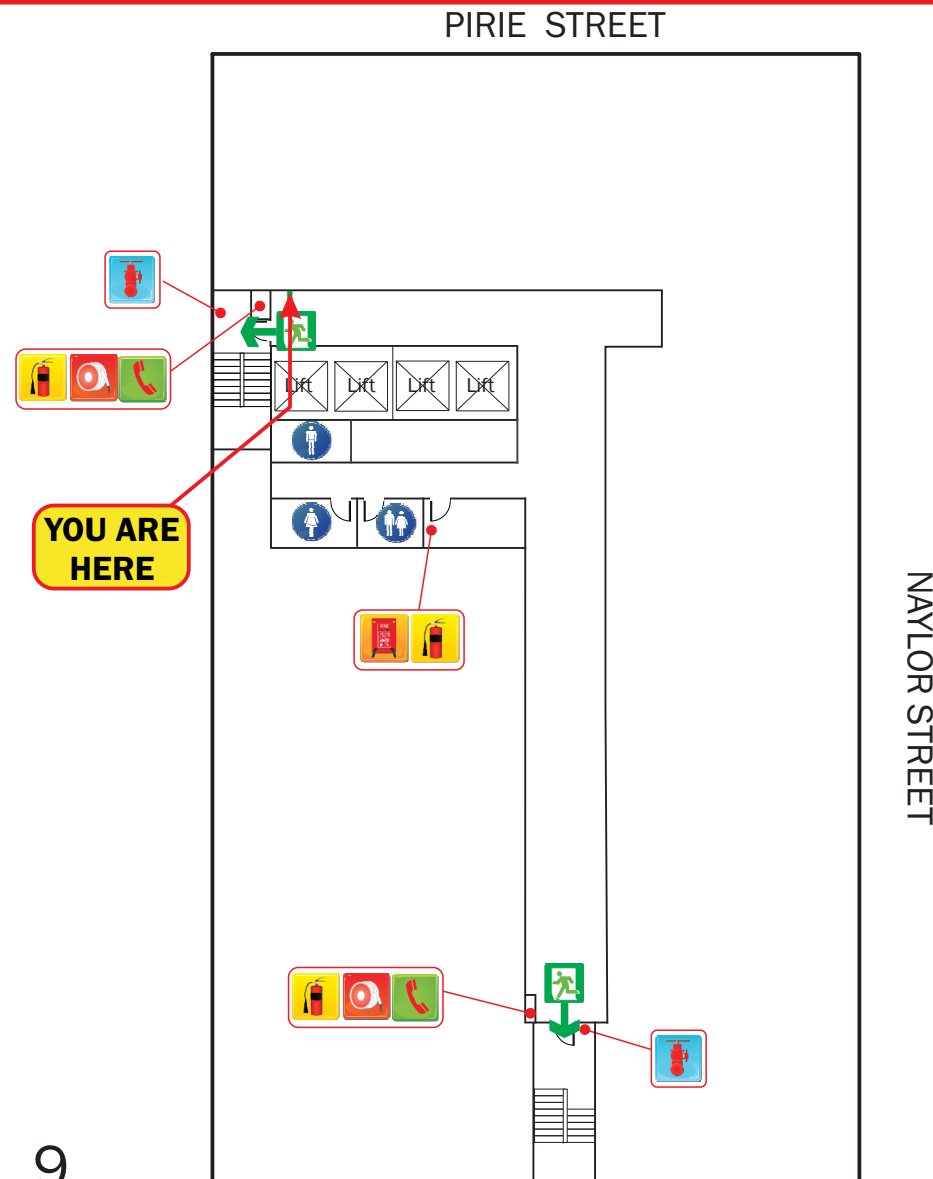
Should the emergency necessitate evacuation of the affected floor, Wardens are to direct occupants to the assembly area via the emergency exits.

ASSEMBLY AREA



LEVEL 9

AURORA ON PIRIE, 147 PIRIE STREET, ADELAIDE



FIRE HOSE REEL



FIRE BLANKET



CARBON DIOXIDE FIRE EXTINGUISHER



FIRE HYDRANT



WARDEN INTERCOM PHONE



ALTERNATIVE EXIT ROUTE



EXIT ROUTE



ASSEMBLY AREA



EMERGENCY EXIT



N

EVACUATION DIAGRAM

first 5 minutes 
Experience makes all the difference.

Phone: 1300 321 120
Website: first5minutes.com.au

Issue Date: 1 September 2015
(Valid for a period of 5 years)

Diagrams used on this sign are NOT to scale.

RESPONSE TO AN EMERGENCY

R.A.C.E

Whilst emergencies differ, the RACE procedure offers a set of immediate, generic responses which are easily memorised and appropriate in most circumstances. They are:

- R REMOVE** If safe to do so, remove or rescue any persons in immediate danger.
- A ALERT** Notify appropriate personnel or combatting authority. This usually involves calling the Emergency Number and operating the nearest fire alarm.
- C CONTAIN / CONTROL** Close doors, and if safe to do so, deal with the threat.
- E EVACUATE / EXTINGUISH** Remove all other persons from danger. Evacuate to the Assembly Area and remain there until advised otherwise by the Chief Warden.



STAGES OF EVACUATION

Evacuation should be conducted in three distinct stages depending on the severity of the incident.

STAGE 1 - REMOVAL OF PERSONS FROM THE IMMEDIATE DANGER AREA

Occupants are removed from the affected compartment into the next compartment, eg from a room into a corridor. Doors should be closed to confine smoke and fire in the affected compartment.

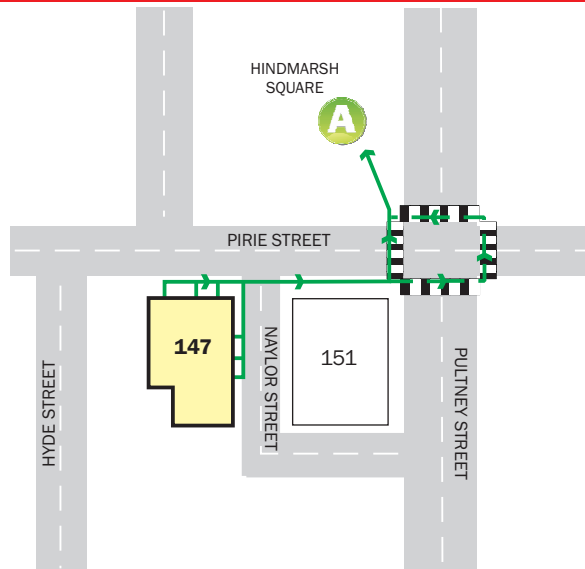
STAGE 2 - REMOVAL TO A SAFE AREA

If the severity of smoke or heat warrants further evacuation, occupants and visitors should be moved to safe areas on the same level.

STAGE 3 - COMPLETE EVACUATION OF THE FLOOR

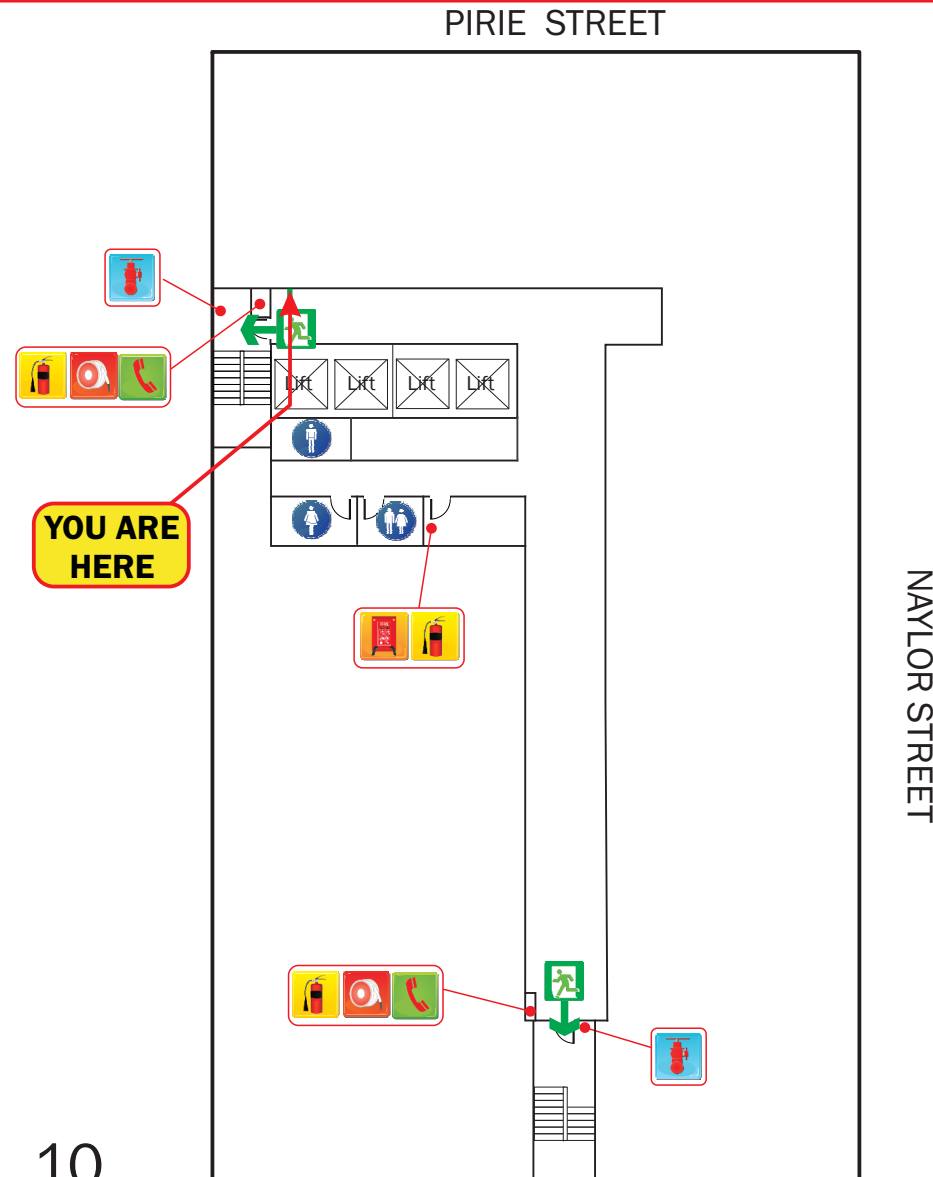
Should the emergency necessitate evacuation of the affected floor, Wardens are to direct occupants to the assembly area via the emergency exits.

ASSEMBLY AREA



LEVEL 10

AURORA ON PIRIE, 147 PIRIE STREET, ADELAIDE



FIRE HOSE REEL



FIRE BLANKET



CARBON DIOXIDE FIRE EXTINGUISHER



FIRE HYDRANT



WARDEN INTERCOM PHONE



ALTERNATIVE EXIT ROUTE



EXIT ROUTE



ASSEMBLY AREA



EMERGENCY EXIT



N

NAVY STREET

PIRIE STREET

EVACUATION DIAGRAM

first 5 minutes 
Experience makes all the difference.

Phone: 1300 321 120
Website: first5minutes.com.au

Issue Date: 1 September 2015
(Valid for a period of 5 years)

Diagrams used on this sign are NOT to scale.

RESPONSE TO AN EMERGENCY

R.A.C.E

Whilst emergencies differ, the RACE procedure offers a set of immediate, generic responses which are easily memorised and appropriate in most circumstances. They are:

- R REMOVE** If safe to do so, remove or rescue any persons in immediate danger.
- A ALERT** Notify appropriate personnel or combatting authority. This usually involves calling the Emergency Number and operating the nearest fire alarm.
- C CONTAIN / CONTROL** Close doors, and if safe to do so, deal with the threat.
- E EVACUATE / EXTINGUISH** Remove all other persons from danger. Evacuate to the Assembly Area and remain there until advised otherwise by the Chief Warden.



STAGES OF EVACUATION

Evacuation should be conducted in three distinct stages depending on the severity of the incident.

STAGE 1 - REMOVAL OF PERSONS FROM THE IMMEDIATE DANGER AREA

Occupants are removed from the affected compartment into the next compartment, eg from a room into a corridor. Doors should be closed to confine smoke and fire in the affected compartment.

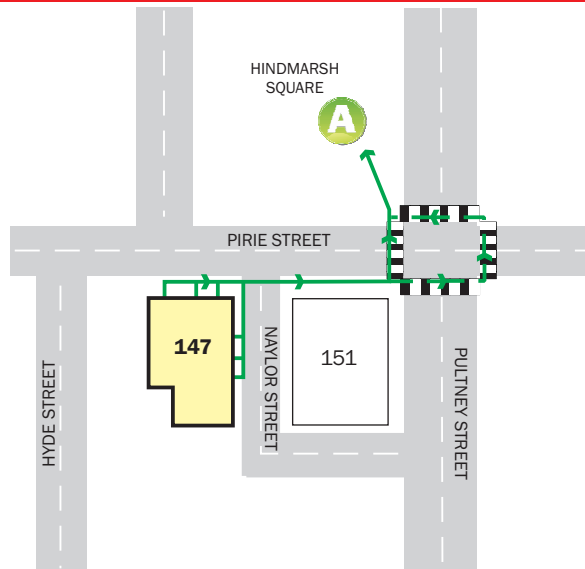
STAGE 2 - REMOVAL TO A SAFE AREA

If the severity of smoke or heat warrants further evacuation, occupants and visitors should be moved to safe areas on the same level.

STAGE 3 - COMPLETE EVACUATION OF THE FLOOR

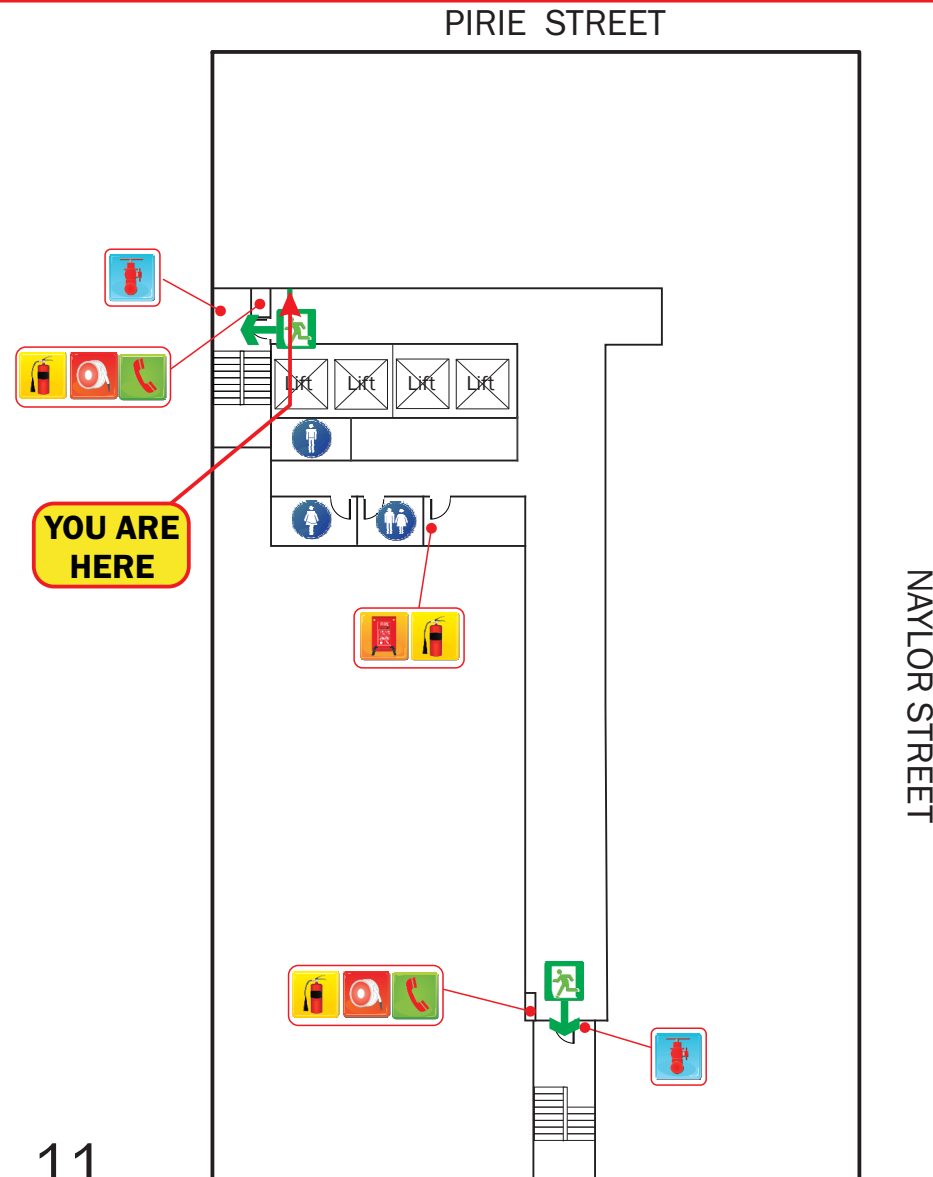
Should the emergency necessitate evacuation of the affected floor, Wardens are to direct occupants to the assembly area via the emergency exits.

ASSEMBLY AREA



LEVEL 11

AURORA ON PIRIE, 147 PIRIE STREET, ADELAIDE



FIRE HOSE REEL



FIRE BLANKET



CARBON DIOXIDE FIRE EXTINGUISHER



FIRE HYDRANT



WARDEN INTERCOM PHONE



ALTERNATIVE EXIT ROUTE



EXIT ROUTE



ASSEMBLY AREA



EMERGENCY EXIT



N

NAVY STREET

PIRIE STREET

EVACUATION DIAGRAM

first 5 minutes 
Experience makes all the difference.

Phone: 1300 321 120
Website: first5minutes.com.au

Issue Date: 1 September 2015
(Valid for a period of 5 years)

Diagrams used on this sign are NOT to scale.

RESPONSE TO AN EMERGENCY

R.A.C.E

Whilst emergencies differ, the RACE procedure offers a set of immediate, generic responses which are easily memorised and appropriate in most circumstances. They are:

- R REMOVE** If safe to do so, remove or rescue any persons in immediate danger.
- A ALERT** Notify appropriate personnel or combatting authority. This usually involves calling the Emergency Number and operating the nearest fire alarm.
- C CONTAIN / CONTROL** Close doors, and if safe to do so, deal with the threat.
- E EVACUATE / EXTINGUISH** Remove all other persons from danger. Evacuate to the Assembly Area and remain there until advised otherwise by the Chief Warden.



STAGES OF EVACUATION

Evacuation should be conducted in three distinct stages depending on the severity of the incident.

STAGE 1 - REMOVAL OF PERSONS FROM THE IMMEDIATE DANGER AREA

Occupants are removed from the affected compartment into the next compartment, eg from a room into a corridor. Doors should be closed to confine smoke and fire in the affected compartment.

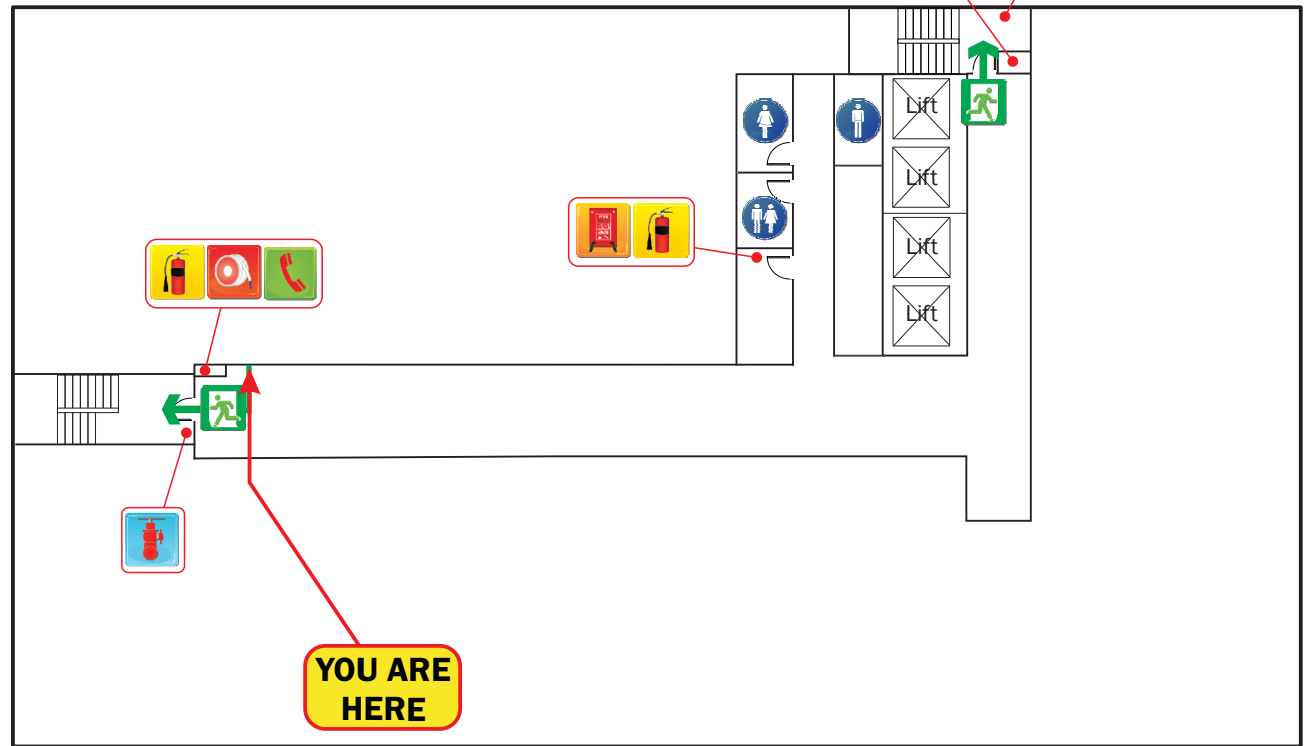
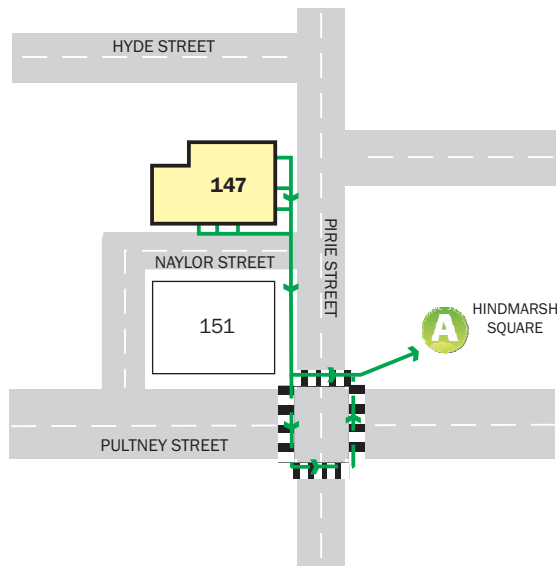
STAGE 2 - REMOVAL TO A SAFE AREA

If the severity of smoke or heat warrants further evacuation, occupants and visitors should be moved to safe areas on the same level.

STAGE 3 - COMPLETE EVACUATION OF THE FLOOR

Should the emergency necessitate evacuation of the affected floor, Wardens are to direct occupants to the assembly area via the emergency exits.

ASSEMBLY AREA



PIRIE STREET

NAYLOR STREET

LEVEL 3

AURORA ON PIRIE, 147 PIRIE STREET, ADELAIDE



EVACUATION DIAGRAM

first 5 minutes 
Experience makes all the difference.

Phone: 1300 321 120
Website: first5minutes.com.au

Issue Date: 1 September 2015
(Valid for a period of 5 years)

Diagrams used on this sign are NOT to scale.

RESPONSE TO AN EMERGENCY

R.A.C.E

Whilst emergencies differ, the RACE procedure offers a set of immediate, generic responses which are easily memorised and appropriate in most circumstances. They are:

- R REMOVE** If safe to do so, remove or rescue any persons in immediate danger.
- A ALERT** Notify appropriate personnel or combatting authority. This usually involves calling the Emergency Number and operating the nearest fire alarm.
- C CONTAIN / CONTROL** Close doors, and if safe to do so, deal with the threat.
- E EVACUATE / EXTINGUISH** Remove all other persons from danger. Evacuate to the Assembly Area and remain there until advised otherwise by the Chief Warden.



STAGES OF EVACUATION

Evacuation should be conducted in three distinct stages depending on the severity of the incident.

STAGE 1 - REMOVAL OF PERSONS FROM THE IMMEDIATE DANGER AREA

Occupants are removed from the affected compartment into the next compartment, eg from a room into a corridor. Doors should be closed to confine smoke and fire in the affected compartment.

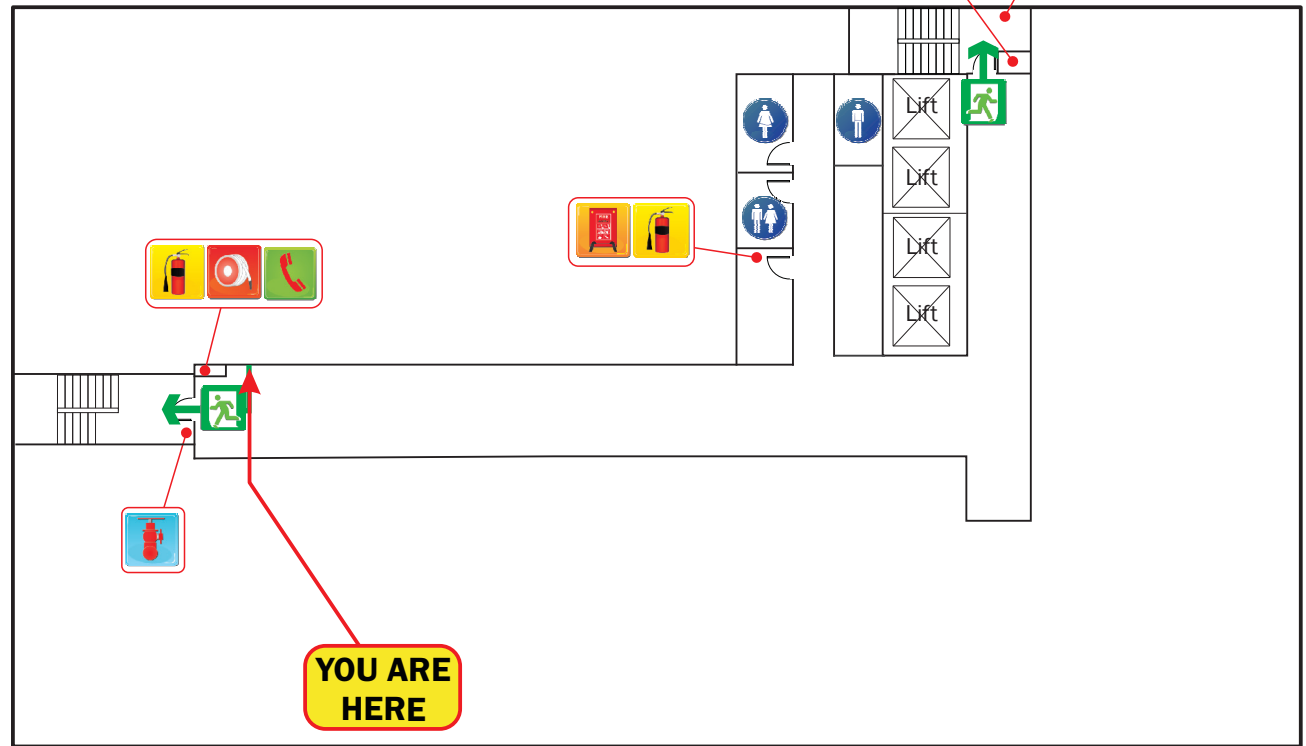
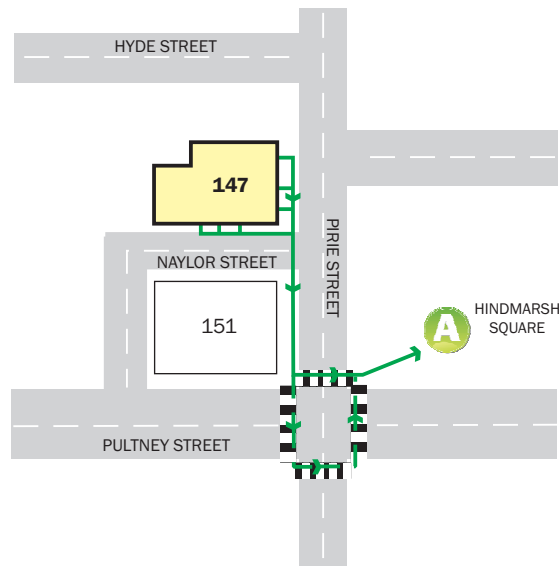
STAGE 2 - REMOVAL TO A SAFE AREA

If the severity of smoke or heat warrants further evacuation, occupants and visitors should be moved to safe areas on the same level.

STAGE 3 - COMPLETE EVACUATION OF THE FLOOR

Should the emergency necessitate evacuation of the affected floor, Wardens are to direct occupants to the assembly area via the emergency exits.

ASSEMBLY AREA



PIRIE STREET

NAYLOR STREET

LEVEL 5

AURORA ON PIRIE, 147 PIRIE STREET, ADELAIDE

									
FIRE HOSE REEL	FIRE BLANKET	CARBON DIOXIDE FIRE EXTINGUISHER	FIRE HYDRANT	WARDEN INTERCOM PHONE	ALTERNATIVE EXIT ROUTE	EXIT ROUTE	ASSEMBLY AREA	EMERGENCY EXIT	N

EVACUATION DIAGRAM

first 5 minutes 
Experience makes all the difference.

Phone: 1300 321 120
Website: first5minutes.com.au

Issue Date: 1 September 2015
(Valid for a period of 5 years)

Diagrams used on this sign are NOT to scale.

RESPONSE TO AN EMERGENCY

R.A.C.E

Whilst emergencies differ, the RACE procedure offers a set of immediate, generic responses which are easily memorised and appropriate in most circumstances. They are:

- R REMOVE** If safe to do so, remove or rescue any persons in immediate danger.
- A ALERT** Notify appropriate personnel or combatting authority. This usually involves calling the Emergency Number and operating the nearest fire alarm.
- C CONTAIN / CONTROL** Close doors, and if safe to do so, deal with the threat.
- E EVACUATE / EXTINGUISH** Remove all other persons from danger. Evacuate to the Assembly Area and remain there until advised otherwise by the Chief Warden.



STAGES OF EVACUATION

Evacuation should be conducted in three distinct stages depending on the severity of the incident.

STAGE 1 - REMOVAL OF PERSONS FROM THE IMMEDIATE DANGER AREA

Occupants are removed from the affected compartment into the next compartment, eg from a room into a corridor. Doors should be closed to confine smoke and fire in the affected compartment.

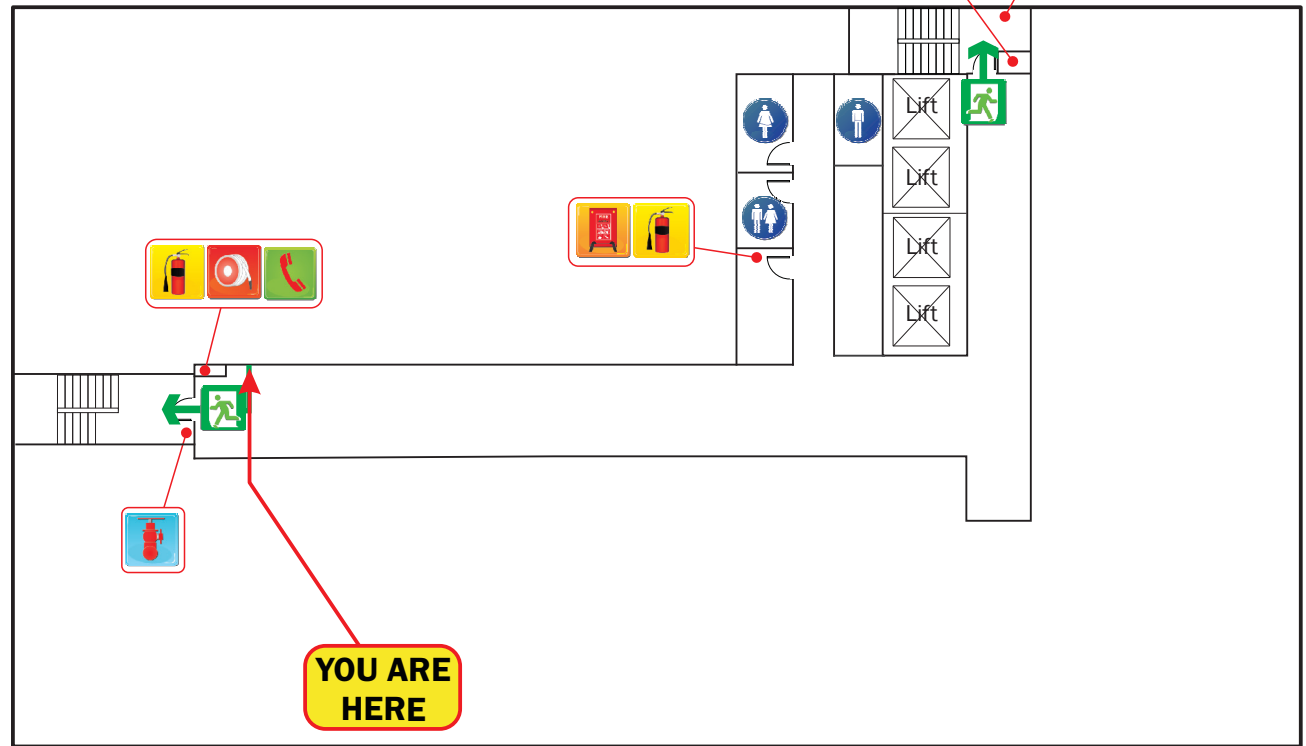
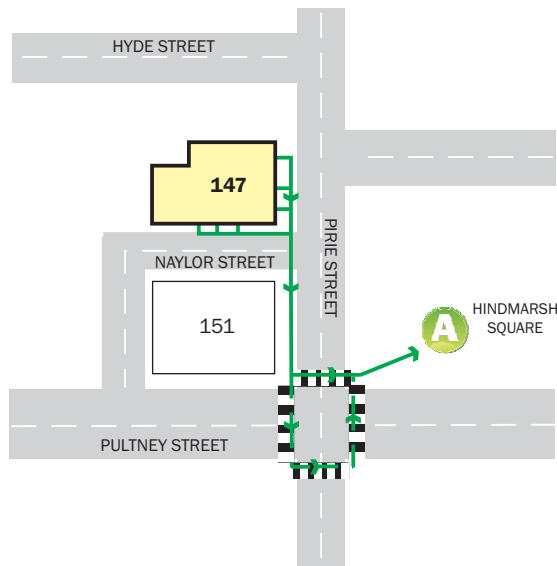
STAGE 2 - REMOVAL TO A SAFE AREA

If the severity of smoke or heat warrants further evacuation, occupants and visitors should be moved to safe areas on the same level.

STAGE 3 - COMPLETE EVACUATION OF THE FLOOR

Should the emergency necessitate evacuation of the affected floor, Wardens are to direct occupants to the assembly area via the emergency exits.

ASSEMBLY AREA



PIRIE STREET

NAYLOR STREET

LEVEL 6

AURORA ON PIRIE, 147 PIRIE STREET, ADELAIDE

FIRE HOSE REEL	FIRE BLANKET	CARBON DIOXIDE FIRE EXTINGUISHER	FIRE HYDRANT	WARDEN INTERCOM PHONE	ALTERNATIVE EXIT ROUTE	EXIT ROUTE	ASSEMBLY AREA	EMERGENCY EXIT	N

EVACUATION DIAGRAM

first 5 minutes 
Experience makes all the difference.

Phone: 1300 321 120
Website: first5minutes.com.au

Issue Date: 1 September 2015
(Valid for a period of 5 years)

Diagrams used on this sign are NOT to scale.

RESPONSE TO AN EMERGENCY

R.A.C.E

Whilst emergencies differ, the RACE procedure offers a set of immediate, generic responses which are easily memorised and appropriate in most circumstances. They are:

- R REMOVE** If safe to do so, remove or rescue any persons in immediate danger.
- A ALERT** Notify appropriate personnel or combatting authority. This usually involves calling the Emergency Number and operating the nearest fire alarm.
- C CONTAIN / CONTROL** Close doors, and if safe to do so, deal with the threat.
- E EVACUATE / EXTINGUISH** Remove all other persons from danger. Evacuate to the Assembly Area and remain there until advised otherwise by the Chief Warden.



STAGES OF EVACUATION

Evacuation should be conducted in three distinct stages depending on the severity of the incident.

STAGE 1 - REMOVAL OF PERSONS FROM THE IMMEDIATE DANGER AREA

Occupants are removed from the affected compartment into the next compartment, eg from a room into a corridor. Doors should be closed to confine smoke and fire in the affected compartment.

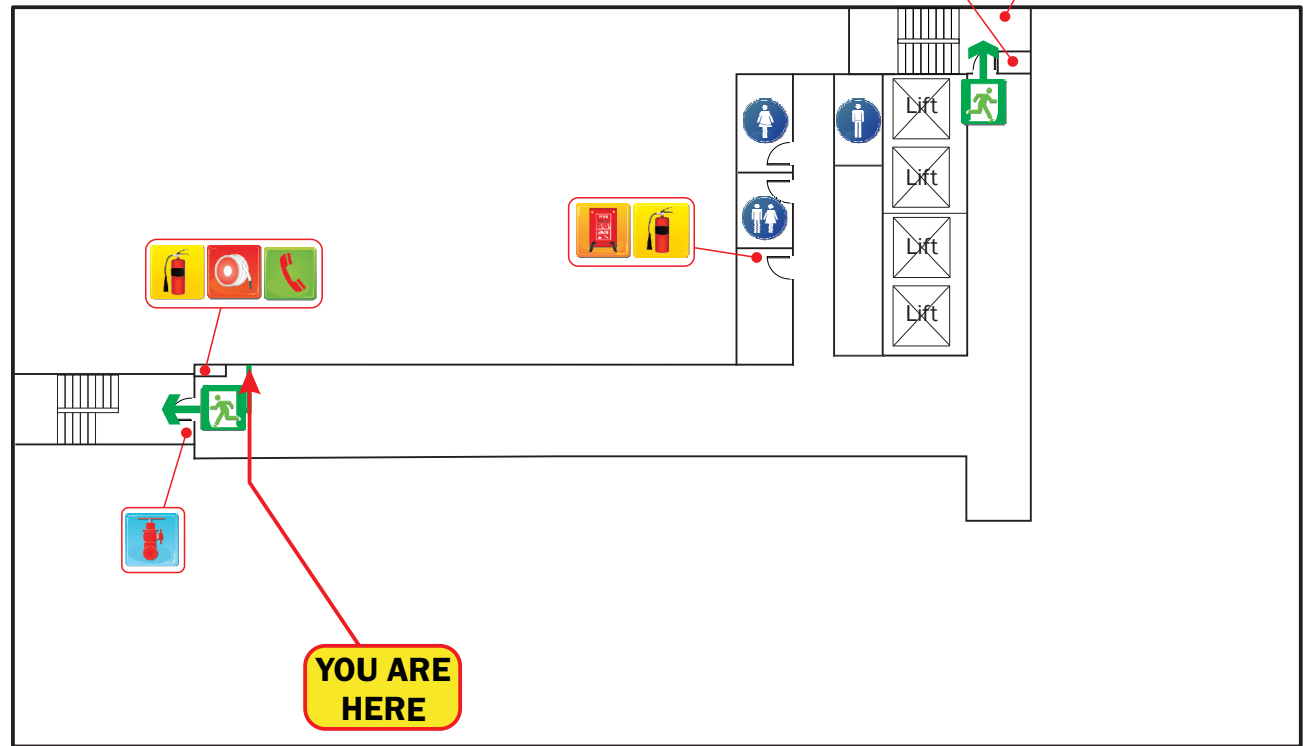
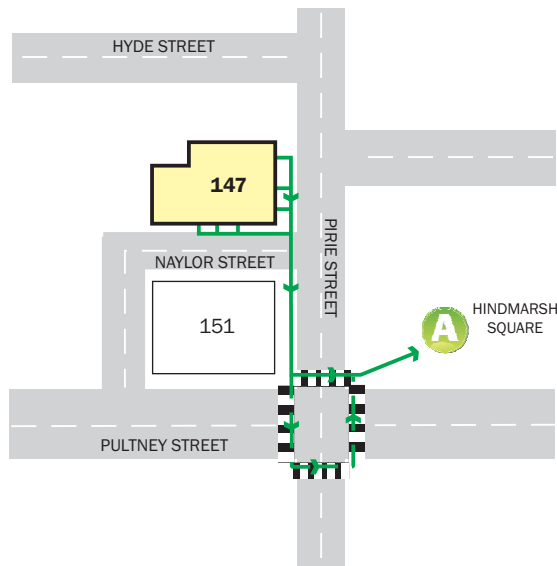
STAGE 2 - REMOVAL TO A SAFE AREA

If the severity of smoke or heat warrants further evacuation, occupants and visitors should be moved to safe areas on the same level.

STAGE 3 - COMPLETE EVACUATION OF THE FLOOR

Should the emergency necessitate evacuation of the affected floor, Wardens are to direct occupants to the assembly area via the emergency exits.

ASSEMBLY AREA



PIRIE STREET

NAYLOR STREET

LEVEL 7

AURORA ON PIRIE, 147 PIRIE STREET, ADELAIDE

									
FIRE HOSE REEL	FIRE BLANKET	CARBON DIOXIDE FIRE EXTINGUISHER	FIRE HYDRANT	WARDEN INTERCOM PHONE	ALTERNATIVE EXIT ROUTE	EXIT ROUTE	ASSEMBLY AREA	EMERGENCY EXIT	

EVACUATION DIAGRAM

first 5 minutes 
Experience makes all the difference.

Phone: 1300 321 120
Website: first5minutes.com.au

Issue Date: 1 September 2015
(Valid for a period of 5 years)

Diagrams used on this sign are NOT to scale.

RESPONSE TO AN EMERGENCY

R.A.C.E

Whilst emergencies differ, the RACE procedure offers a set of immediate, generic responses which are easily memorised and appropriate in most circumstances. They are:

- R REMOVE** If safe to do so, remove or rescue any persons in immediate danger.
- A ALERT** Notify appropriate personnel or combatting authority. This usually involves calling the Emergency Number and operating the nearest fire alarm.
- C CONTAIN / CONTROL** Close doors, and if safe to do so, deal with the threat.
- E EVACUATE / EXTINGUISH** Remove all other persons from danger. Evacuate to the Assembly Area and remain there until advised otherwise by the Chief Warden.



STAGES OF EVACUATION

Evacuation should be conducted in three distinct stages depending on the severity of the incident.

STAGE 1 - REMOVAL OF PERSONS FROM THE IMMEDIATE DANGER AREA

Occupants are removed from the affected compartment into the next compartment, eg from a room into a corridor. Doors should be closed to confine smoke and fire in the affected compartment.

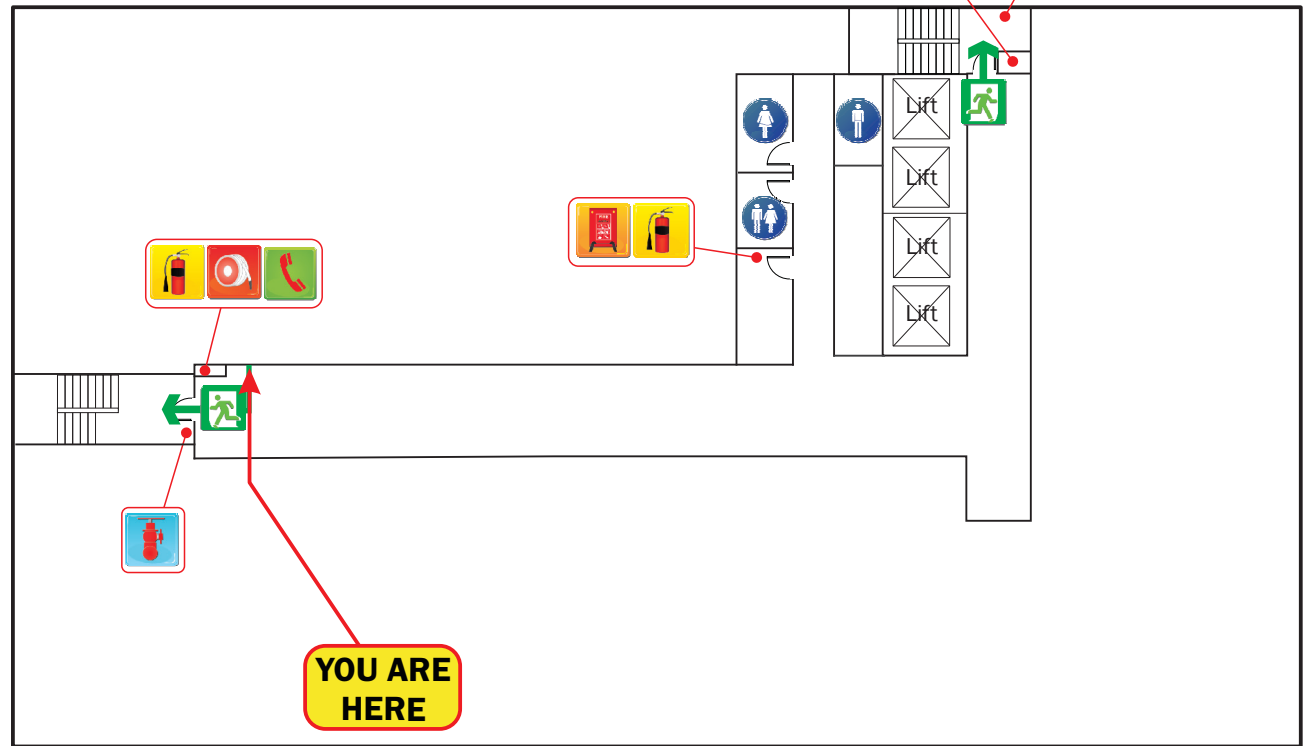
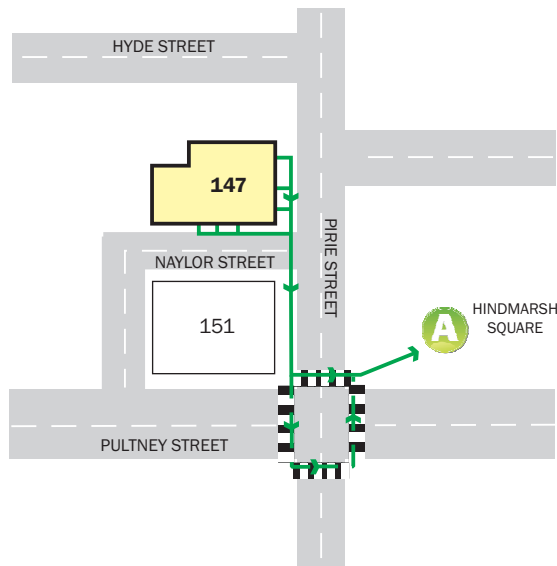
STAGE 2 - REMOVAL TO A SAFE AREA

If the severity of smoke or heat warrants further evacuation, occupants and visitors should be moved to safe areas on the same level.

STAGE 3 - COMPLETE EVACUATION OF THE FLOOR

Should the emergency necessitate evacuation of the affected floor, Wardens are to direct occupants to the assembly area via the emergency exits.

ASSEMBLY AREA



PIRIE STREET

NAYLOR STREET

LEVEL 8

AURORA ON PIRIE, 147 PIRIE STREET, ADELAIDE



EVACUATION DIAGRAM

first 5 minutes 
Experience makes all the difference.

Phone: 1300 321 120
Website: first5minutes.com.au

Issue Date: 1 September 2015
(Valid for a period of 5 years)

Diagrams used on this sign are NOT to scale.

RESPONSE TO AN EMERGENCY

R.A.C.E

Whilst emergencies differ, the RACE procedure offers a set of immediate, generic responses which are easily memorised and appropriate in most circumstances. They are:

- R REMOVE** If safe to do so, remove or rescue any persons in immediate danger.
- A ALERT** Notify appropriate personnel or combatting authority. This usually involves calling the Emergency Number and operating the nearest fire alarm.
- C CONTAIN / CONTROL** Close doors, and if safe to do so, deal with the threat.
- E EVACUATE / EXTINGUISH** Remove all other persons from danger. Evacuate to the Assembly Area and remain there until advised otherwise by the Chief Warden.



STAGES OF EVACUATION

Evacuation should be conducted in three distinct stages depending on the severity of the incident.

STAGE 1 - REMOVAL OF PERSONS FROM THE IMMEDIATE DANGER AREA

Occupants are removed from the affected compartment into the next compartment, eg from a room into a corridor. Doors should be closed to confine smoke and fire in the affected compartment.

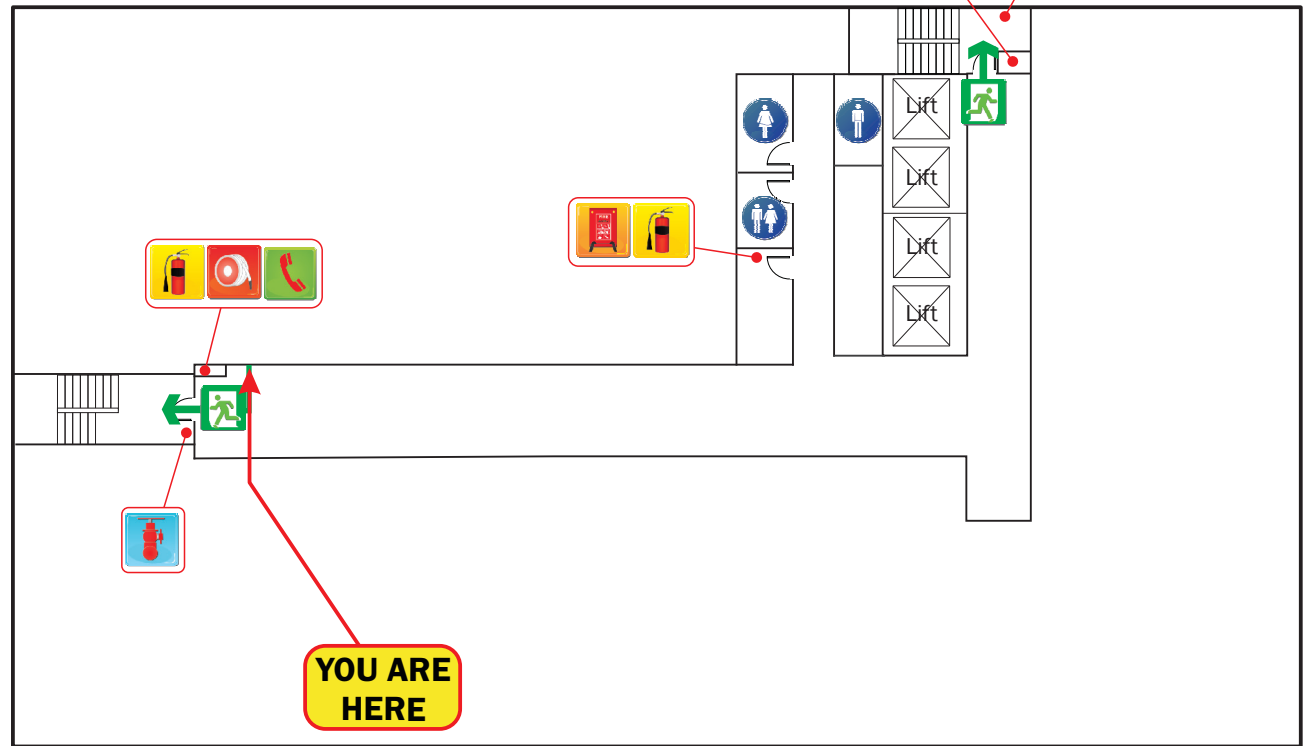
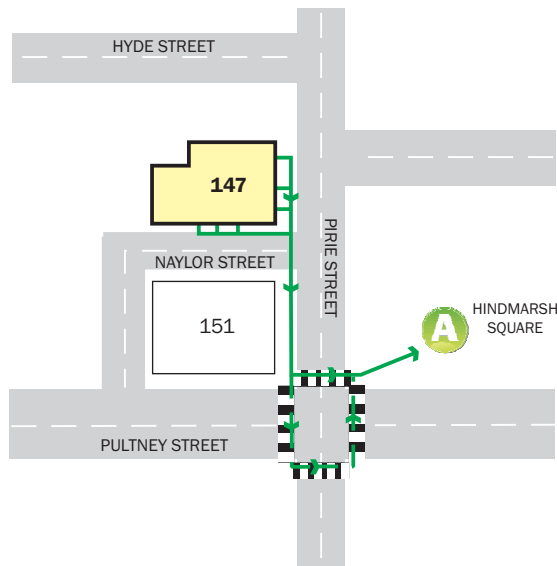
STAGE 2 - REMOVAL TO A SAFE AREA

If the severity of smoke or heat warrants further evacuation, occupants and visitors should be moved to safe areas on the same level.

STAGE 3 - COMPLETE EVACUATION OF THE FLOOR

Should the emergency necessitate evacuation of the affected floor, Wardens are to direct occupants to the assembly area via the emergency exits.

ASSEMBLY AREA



PIRIE STREET

NAYLOR STREET

LEVEL 9

AURORA ON PIRIE, 147 PIRIE STREET, ADELAIDE



FIRE HOSE REEL



FIRE BLANKET



CARBON DIOXIDE FIRE EXTINGUISHER



FIRE HYDRANT



WARDEN INTERCOM PHONE



ALTERNATIVE EXIT ROUTE



EXIT ROUTE



ASSEMBLY AREA



EMERGENCY EXIT



N

EVACUATION DIAGRAM

first 5 minutes 
Experience makes all the difference.

Phone: 1300 321 120
Website: first5minutes.com.au

Issue Date: 1 September 2015
(Valid for a period of 5 years)

Diagrams used on this sign are NOT to scale.

RESPONSE TO AN EMERGENCY

R.A.C.E

Whilst emergencies differ, the RACE procedure offers a set of immediate, generic responses which are easily memorised and appropriate in most circumstances. They are:

- R REMOVE** If safe to do so, remove or rescue any persons in immediate danger.
- A ALERT** Notify appropriate personnel or combatting authority. This usually involves calling the Emergency Number and operating the nearest fire alarm.
- C CONTAIN / CONTROL** Close doors, and if safe to do so, deal with the threat.
- E EVACUATE / EXTINGUISH** Remove all other persons from danger. Evacuate to the Assembly Area and remain there until advised otherwise by the Chief Warden.



STAGES OF EVACUATION

Evacuation should be conducted in three distinct stages depending on the severity of the incident.

STAGE 1 - REMOVAL OF PERSONS FROM THE IMMEDIATE DANGER AREA

Occupants are removed from the affected compartment into the next compartment, eg from a room into a corridor. Doors should be closed to confine smoke and fire in the affected compartment.

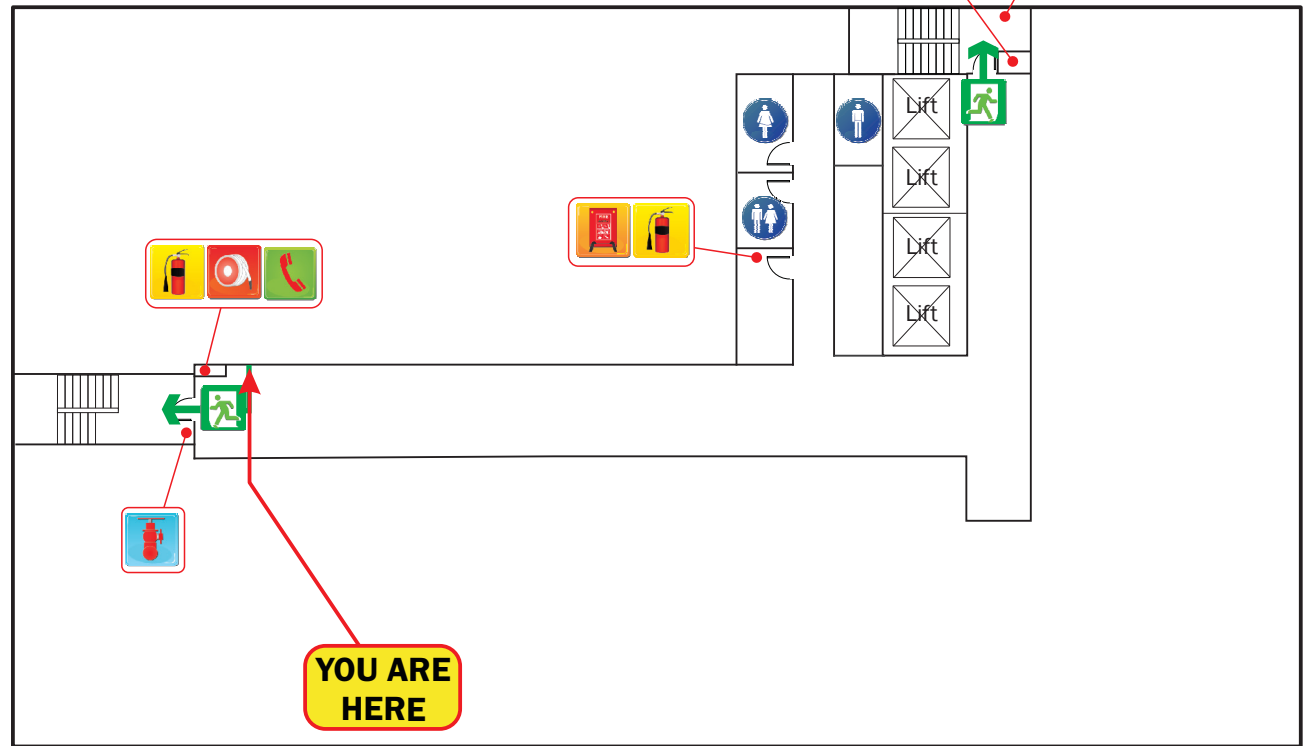
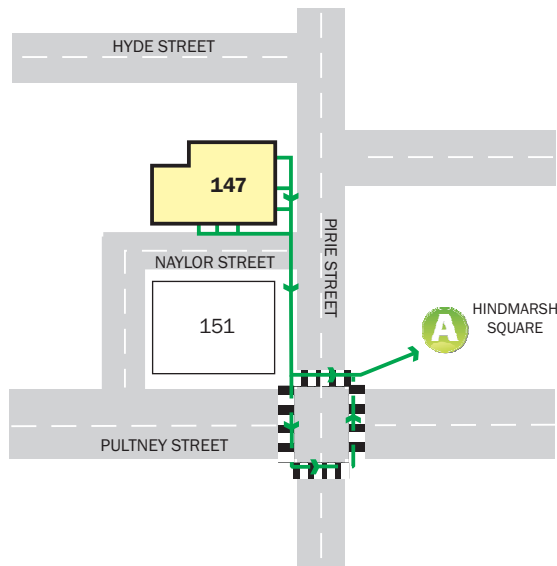
STAGE 2 - REMOVAL TO A SAFE AREA

If the severity of smoke or heat warrants further evacuation, occupants and visitors should be moved to safe areas on the same level.

STAGE 3 - COMPLETE EVACUATION OF THE FLOOR

Should the emergency necessitate evacuation of the affected floor, Wardens are to direct occupants to the assembly area via the emergency exits.

ASSEMBLY AREA



PIRIE STREET

NAYLOR STREET

LEVEL 10

AURORA ON PIRIE, 147 PIRIE STREET, ADELAIDE



EVACUATION DIAGRAM

first 5 minutes 
Experience makes all the difference.

Phone: 1300 321 120
Website: first5minutes.com.au

Issue Date: 1 September 2015
(Valid for a period of 5 years)

Diagrams used on this sign are NOT to scale.

RESPONSE TO AN EMERGENCY

R.A.C.E

Whilst emergencies differ, the RACE procedure offers a set of immediate, generic responses which are easily memorised and appropriate in most circumstances. They are:

- R REMOVE** If safe to do so, remove or rescue any persons in immediate danger.
- A ALERT** Notify appropriate personnel or combatting authority. This usually involves calling the Emergency Number and operating the nearest fire alarm.
- C CONTAIN / CONTROL** Close doors, and if safe to do so, deal with the threat.
- E EVACUATE / EXTINGUISH** Remove all other persons from danger. Evacuate to the Assembly Area and remain there until advised otherwise by the Chief Warden.



STAGES OF EVACUATION

Evacuation should be conducted in three distinct stages depending on the severity of the incident.

STAGE 1 - REMOVAL OF PERSONS FROM THE IMMEDIATE DANGER AREA

Occupants are removed from the affected compartment into the next compartment, eg from a room into a corridor. Doors should be closed to confine smoke and fire in the affected compartment.

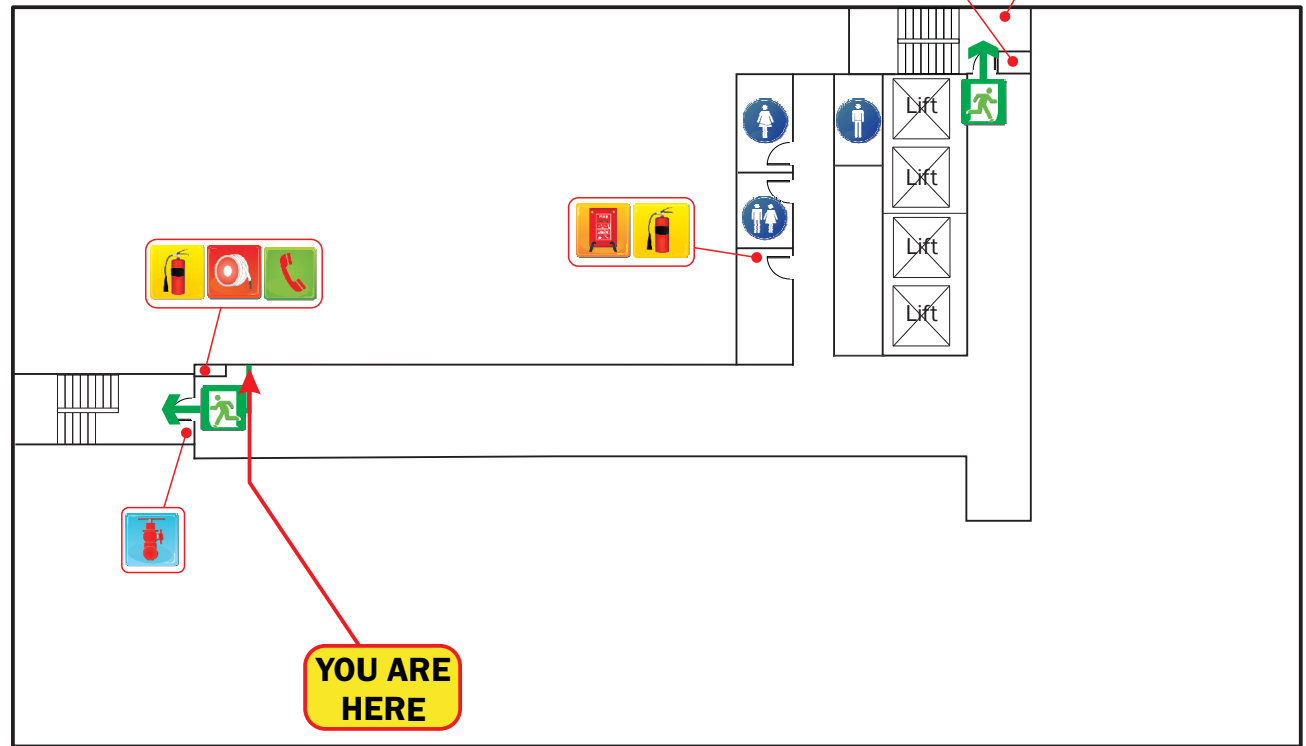
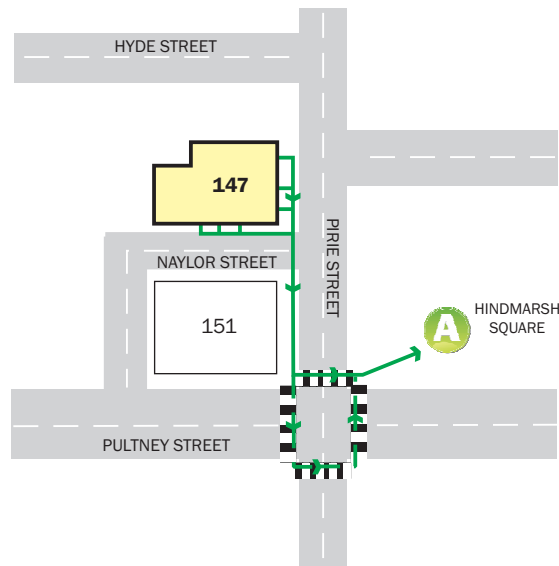
STAGE 2 - REMOVAL TO A SAFE AREA

If the severity of smoke or heat warrants further evacuation, occupants and visitors should be moved to safe areas on the same level.

STAGE 3 - COMPLETE EVACUATION OF THE FLOOR

Should the emergency necessitate evacuation of the affected floor, Wardens are to direct occupants to the assembly area via the emergency exits.

ASSEMBLY AREA



PIRIE STREET

NAYLOR STREET

LEVEL 11

AURORA ON PIRIE, 147 PIRIE STREET, ADELAIDE



EVACUATION DIAGRAM

first 5 minutes 
Experience makes all the difference.

Phone: 1300 321 120
Website: first5minutes.com.au

Issue Date: 1 September 2015
(Valid for a period of 5 years)

Diagrams used on this sign are NOT to scale.

RESPONSE TO AN EMERGENCY

R.A.C.E

Whilst emergencies differ, the RACE procedure offers a set of immediate, generic responses which are easily memorised and appropriate in most circumstances. They are:

- R REMOVE** If safe to do so, remove or rescue any persons in immediate danger.
- A ALERT** Notify appropriate personnel or combatting authority. This usually involves calling the Emergency Number and operating the nearest fire alarm.
- C CONTAIN / CONTROL** Close doors, and if safe to do so, deal with the threat.
- E EVACUATE / EXTINGUISH** Remove all other persons from danger. Evacuate to the Assembly Area and remain there until advised otherwise by the Chief Warden.



STAGES OF EVACUATION

Evacuation should be conducted in three distinct stages depending on the severity of the incident.

STAGE 1 - REMOVAL OF PERSONS FROM THE IMMEDIATE DANGER AREA

Occupants are removed from the affected compartment into the next compartment, eg from a room into a corridor. Doors should be closed to confine smoke and fire in the affected compartment.

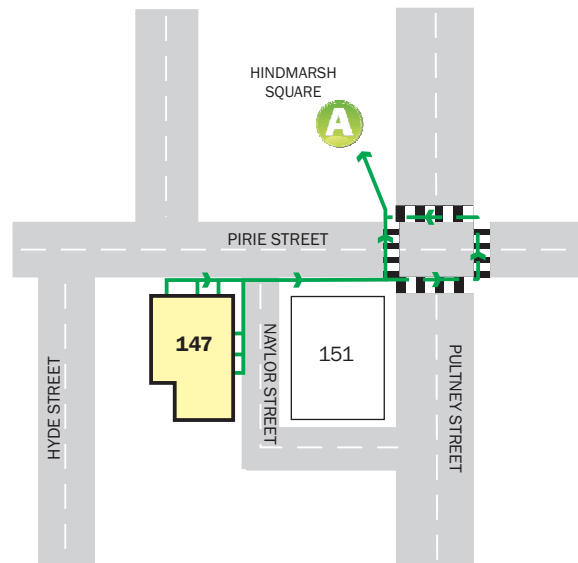
STAGE 2 - REMOVAL TO A SAFE AREA

If the severity of smoke or heat warrants further evacuation, occupants and visitors should be moved to safe areas on the same level.

STAGE 3 - COMPLETE EVACUATION OF THE FLOOR

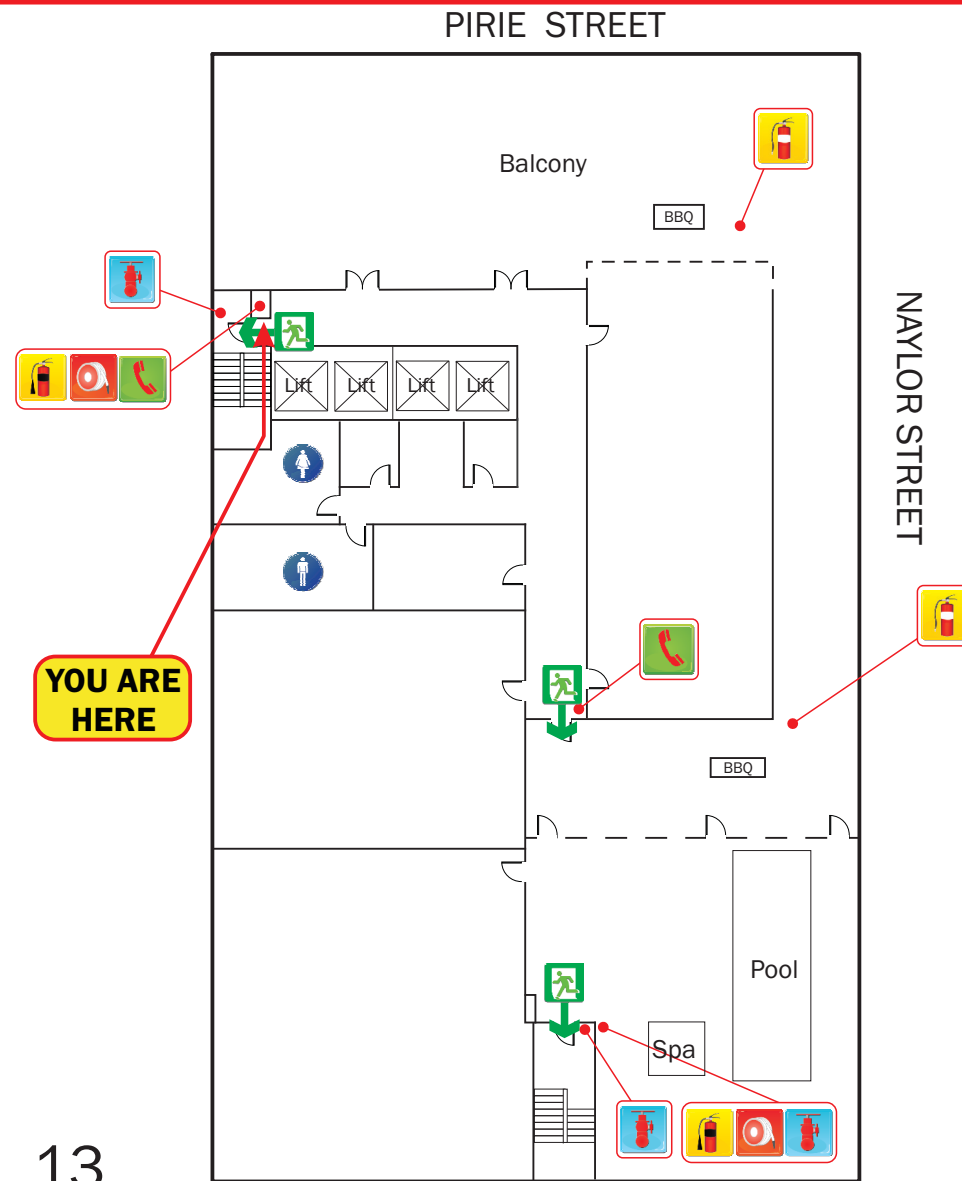
Should the emergency necessitate evacuation of the affected floor, Wardens are to direct occupants to the assembly area via the emergency exits.

ASSEMBLY AREA



LEVEL 13

AURORA ON PIRIE, 147 PIRIE STREET, ADELAIDE



EVACUATION DIAGRAM

first 5 minutes 
Experience makes all the difference.

Phone: 1300 321 120
Website: first5minutes.com.au

Issue Date: 1 September 2015
(Valid for a period of 5 years)

Diagrams used on this sign are NOT to scale.

RESPONSE TO AN EMERGENCY

R.A.C.E

Whilst emergencies differ, the RACE procedure offers a set of immediate, generic responses which are easily memorised and appropriate in most circumstances. They are:

- R REMOVE** If safe to do so, remove or rescue any persons in immediate danger.
- A ALERT** Notify appropriate personnel or combatting authority. This usually involves calling the Emergency Number and operating the nearest fire alarm.
- C CONTAIN / CONTROL** Close doors, and if safe to do so, deal with the threat.
- E EVACUATE / EXTINGUISH** Remove all other persons from danger. Evacuate to the Assembly Area and remain there until advised otherwise by the Chief Warden.



STAGES OF EVACUATION

Evacuation should be conducted in three distinct stages depending on the severity of the incident.

STAGE 1 - REMOVAL OF PERSONS FROM THE IMMEDIATE DANGER AREA

Occupants are removed from the affected compartment into the next compartment, eg from a room into a corridor. Doors should be closed to confine smoke and fire in the affected compartment.

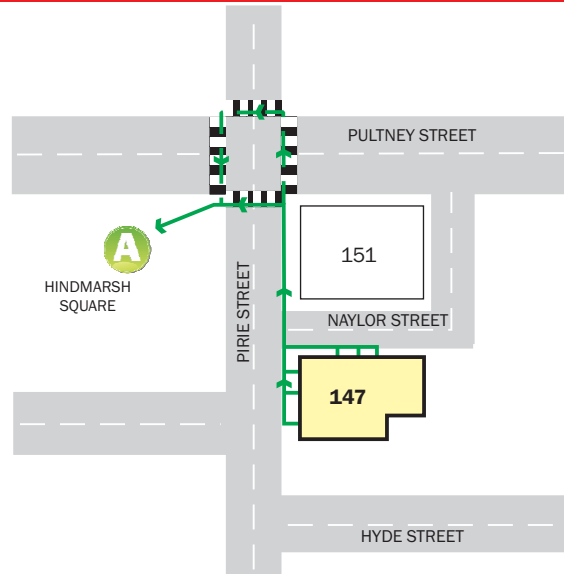
STAGE 2 - REMOVAL TO A SAFE AREA

If the severity of smoke or heat warrants further evacuation, occupants and visitors should be moved to safe areas on the same level.

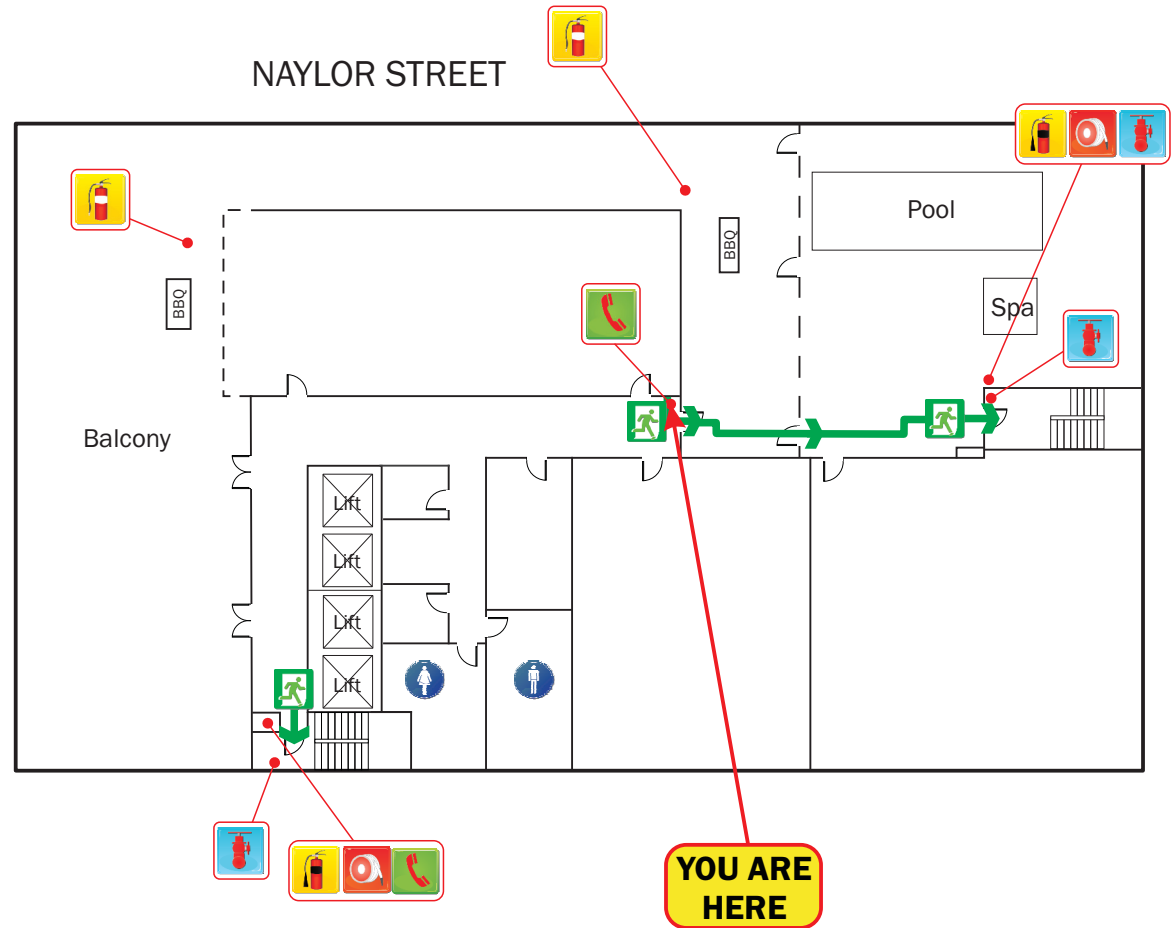
STAGE 3 - COMPLETE EVACUATION OF THE FLOOR

Should the emergency necessitate evacuation of the affected floor, Wardens are to direct occupants to the assembly area via the emergency exits.

ASSEMBLY AREA



PIRIE STREET



LEVEL 13

AURORA ON PIRIE, 147 PIRIE STREET, ADELAIDE



FIRE HOSE REEL

FIRE BLANKET

DRY CHEMICAL POWDER FIRE EXTINGUISHER

CARBON DIOXIDE FIRE EXTINGUISHER

FIRE HYDRANT

WARDEN INTERCOM PHONE

ASSEMBLY AREA

ALTERNATIVE EXIT ROUTE

EXIT ROUTE

EMERGENCY EXIT

N

EVACUATION DIAGRAM

first 5 minutes 
Experience makes all the difference.

Phone: 1300 321 120
Website: first5minutes.com.au

Issue Date: 27 August 20155
(Valid for a period of 5 years)

Diagrams used on this sign are NOT to scale.

RESPONSE TO AN EMERGENCY

R.A.C.E

Whilst emergencies differ, the RACE procedure offers a set of immediate, generic responses which are easily memorised and appropriate in most circumstances. They are:

- R REMOVE** If safe to do so, remove or rescue any persons in immediate danger.
- A ALERT** Notify appropriate personnel or combatting authority. This usually involves calling the Emergency Number and operating the nearest fire alarm.
- C CONTAIN / CONTROL** Close doors, and if safe to do so, deal with the threat.
- E EVACUATE / EXTINGUISH** Remove all other persons from danger. Evacuate to the Assembly Area and remain there until advised otherwise by the Chief Warden.



STAGES OF EVACUATION

Evacuation should be conducted in three distinct stages depending on the severity of the incident.

STAGE 1 - REMOVAL OF PERSONS FROM THE IMMEDIATE DANGER AREA

Occupants are removed from the affected compartment into the next compartment, eg from a room into a corridor. Doors should be closed to confine smoke and fire in the affected compartment.

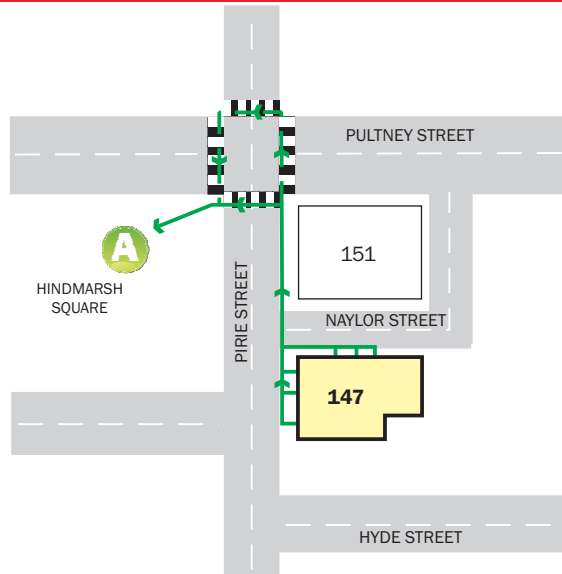
STAGE 2 - REMOVAL TO A SAFE AREA

If the severity of smoke or heat warrants further evacuation, occupants and visitors should be moved to safe areas on the same level.

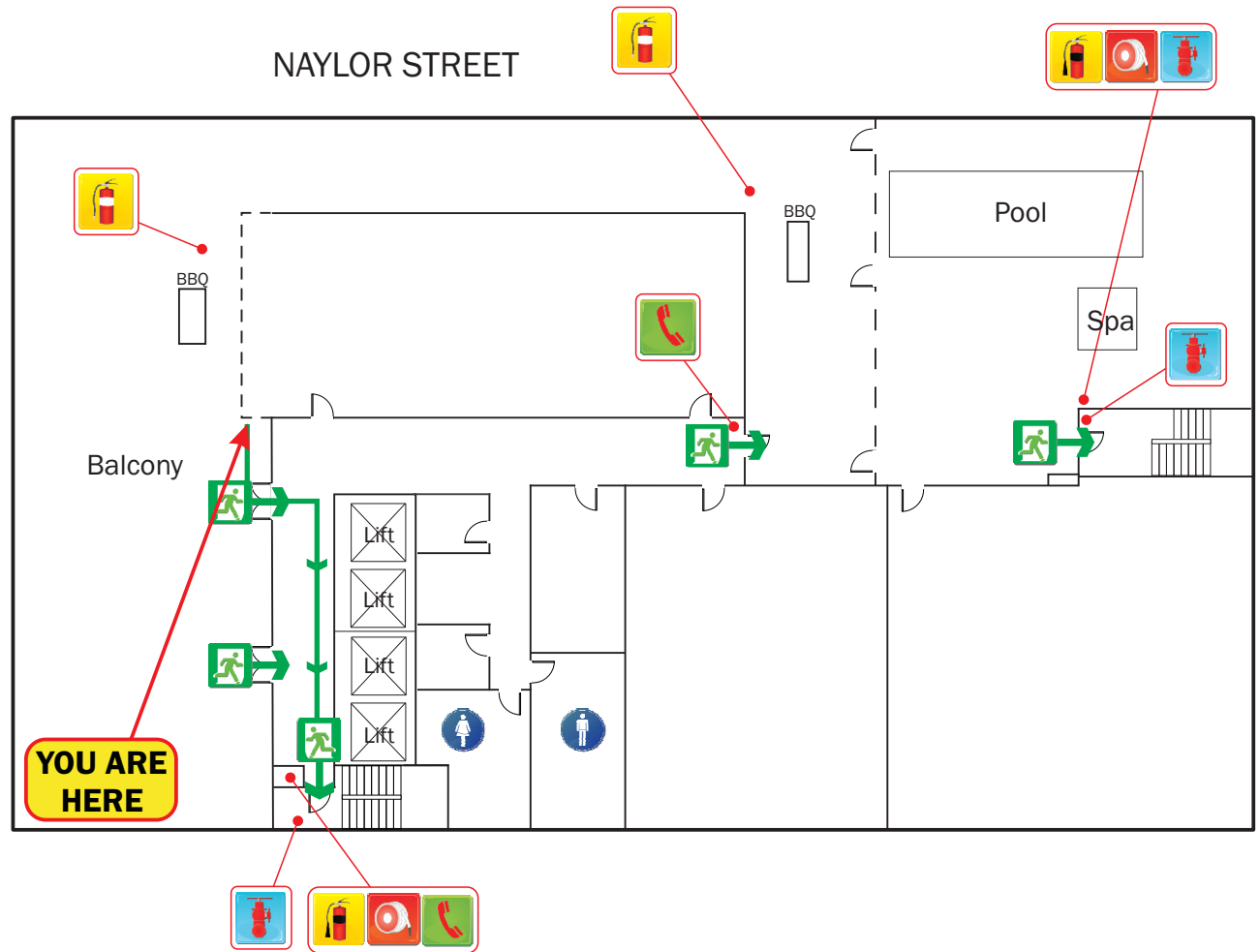
STAGE 3 - COMPLETE EVACUATION OF THE FLOOR

Should the emergency necessitate evacuation of the affected floor, Wardens are to direct occupants to the assembly area via the emergency exits.

ASSEMBLY AREA



PIRIE STREET



SKY DECK

AURORA ON PIRIE, 147 PIRIE STREET, ADELAIDE



EVACUATION DIAGRAM

first 5 minutes
Experience makes all the difference.



Phone: 1300 321 120
Website: first5minutes.com.au

Issue Date: 27 August 20155
(Valid for a period of 5 years)

Diagrams used on this sign are NOT to scale.

RESPONSE TO AN EMERGENCY

R.A.C.E

Whilst emergencies differ, the RACE procedure offers a set of immediate, generic responses which are easily memorised and appropriate in most circumstances. They are:

- R REMOVE** If safe to do so, remove or rescue any persons in immediate danger.
- A ALERT** Notify appropriate personnel or combatting authority. This usually involves calling the Emergency Number and operating the nearest fire alarm.
- C CONTAIN / CONTROL** Close doors, and if safe to do so, deal with the threat.
- E EVACUATE / EXTINGUISH** Remove all other persons from danger. Evacuate to the Assembly Area and remain there until advised otherwise by the Chief Warden.



STAGES OF EVACUATION

Evacuation should be conducted in three distinct stages depending on the severity of the incident.

STAGE 1 - REMOVAL OF PERSONS FROM THE IMMEDIATE DANGER AREA

Occupants are removed from the affected compartment into the next compartment, eg from a room into a corridor. Doors should be closed to confine smoke and fire in the affected compartment.

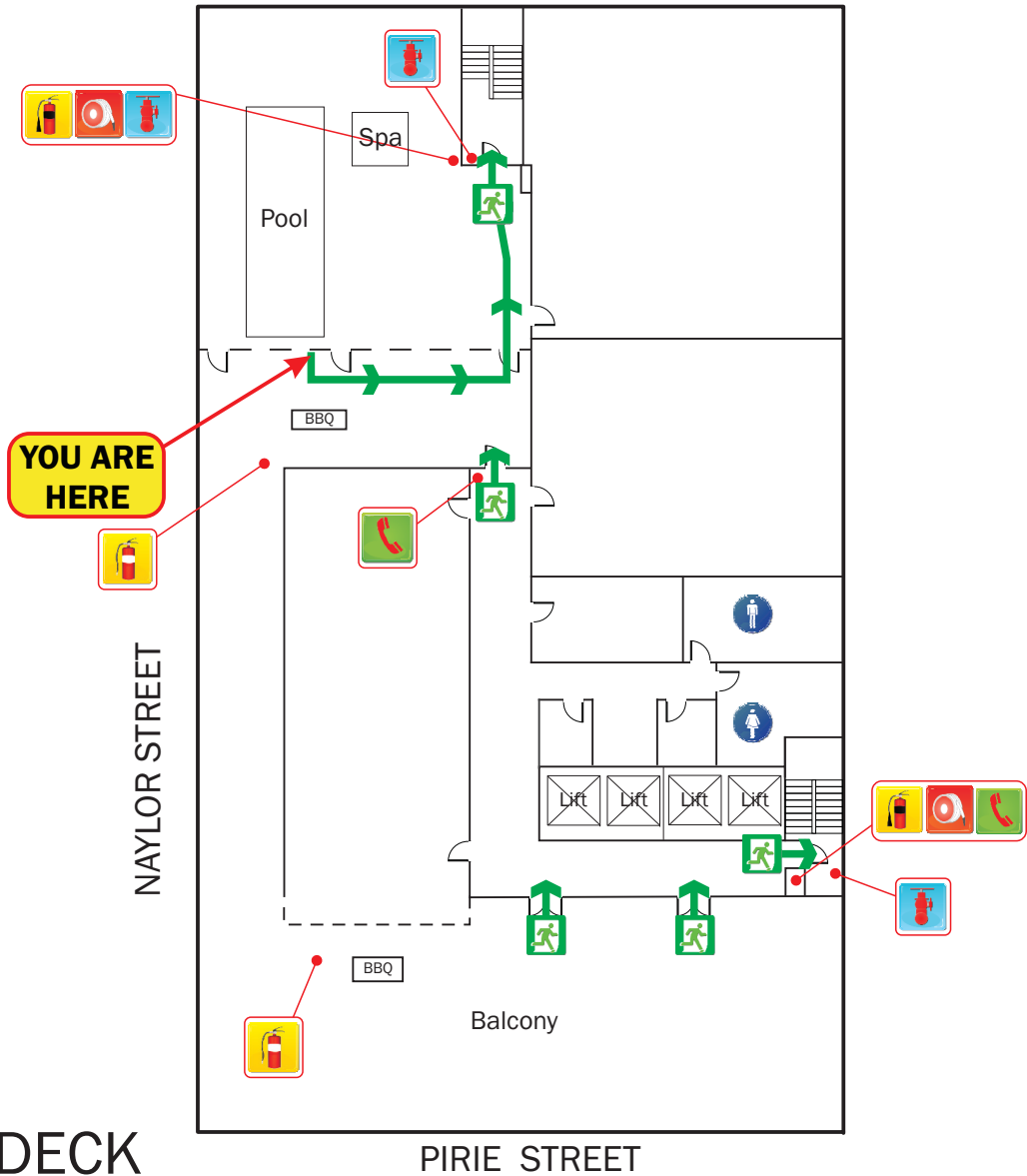
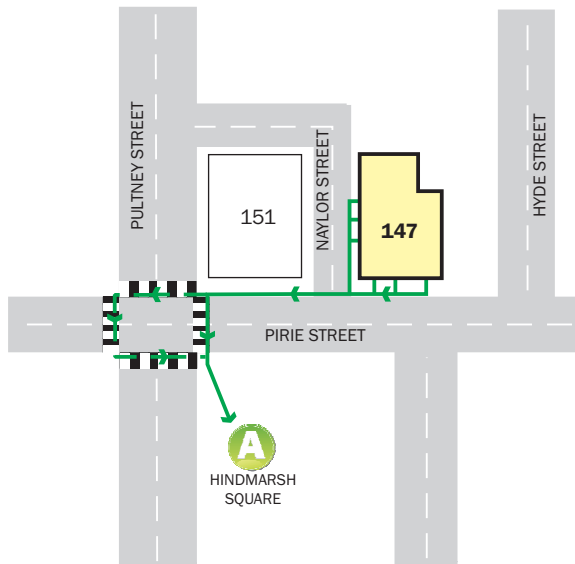
STAGE 2 - REMOVAL TO A SAFE AREA

If the severity of smoke or heat warrants further evacuation, occupants and visitors should be moved to safe areas on the same level.

STAGE 3 - COMPLETE EVACUATION OF THE FLOOR

Should the emergency necessitate evacuation of the affected floor, Wardens are to direct occupants to the assembly area via the emergency exits.

ASSEMBLY AREA



SKY DECK

AURORA ON PIRIE, 147 PIRIE STREET, ADELAIDE



FIRE HOSE REEL



FIRE BLANKET



DRY CHEMICAL POWDER FIRE EXTINGUISHER



CARBON DIOXIDE FIRE EXTINGUISHER



FIRE HYDRANT



WARDEN INTERCOM PHONE



ASSEMBLY AREA



ALTERNATIVE EXIT ROUTE



EXIT ROUTE



EMERGENCY EXIT



N